

Neurocan Antibody

Rabbit mAb

Catalog # AP92533

Product Information

Application	WB, IHC, IP
Primary Accession	O14594
Reactivity	Human
Clonality	Monoclonal
Other Names	Cspg3; Ncan; NEUR; Neurocan core protein;
Isotype	Rabbit IgG
Host	Rabbit
Calculated MW	143093

Additional Information

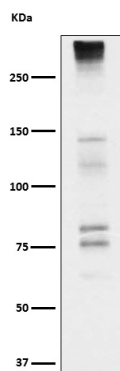
Dilution	WB 1:500~1:2000 IHC 1:50~1:200 IP 1:50
Purification	Affinity-chromatography
Immunogen	A synthesized peptide derived from human Neurocan
Description	May modulate neuronal adhesion and neurite growth during development by binding to neural cell adhesion molecules (NG-CAM and N-CAM). Chondroitin sulfate proteoglycan; binds to hyaluronic acid.
Storage Condition and Buffer	Rabbit IgG in phosphate buffered saline , pH 7.4, 150mM NaCl, 0.02% sodium azide and 50% glycerol. Store at +4°C short term. Store at -20°C long term. Avoid freeze / thaw cycle.

Protein Information

Name	NCAN
Synonyms	CSPG3, NEUR
Function	May modulate neuronal adhesion and neurite growth during development by binding to neural cell adhesion molecules (NG-CAM and N- CAM). Chondroitin sulfate proteoglycan; binds to hyaluronic acid.
Cellular Location	Secreted.
Tissue Location	Detected in cerebrospinal fluid (at protein level) (PubMed:25326458). Brain.

Images

Western blot analysis of Neurocan expression in Fetal brain cell lysate.



Please note: All products are 'FOR RESEARCH USE ONLY. NOT FOR USE IN DIAGNOSTIC OR THERAPEUTIC PROCEDURES'.