

RPL7A Antibody

Rabbit mAb

Catalog # AP92543

Product Information

Application	WB, IHC
Primary Accession	P62424
Reactivity	Rat, Human, Mouse
Clonality	Monoclonal
Other Names	PLA X polypeptide; RP23-414L19.4; RPL7A; SURF3; surfait 3; TRUP;
Isotype	Rabbit IgG
Host	Rabbit
Calculated MW	29996

Additional Information

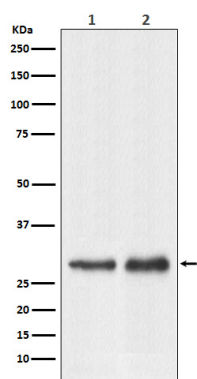
Dilution	WB 1:1000~1:5000 IHC 1:50~1:200
Purification	Affinity-chromatography
Immunogen	A synthesized peptide derived from human RPL7A
Description	Note=Chromosomal recombination involving RPL7A activates the receptor kinase domain of the TRK oncogene.
Storage Condition and Buffer	Rabbit IgG in phosphate buffered saline , pH 7.4, 150mM NaCl, 0.02% sodium azide and 50% glycerol. Store at +4°C short term. Store at -20°C long term. Avoid freeze / thaw cycle.

Protein Information

Name	RPL7A
Synonyms	SURF-3, SURF3
Function	Component of the large ribosomal subunit (PubMed: 23636399 , PubMed: 32669547). The ribosome is a large ribonucleoprotein complex responsible for the synthesis of proteins in the cell (PubMed: 23636399 , PubMed: 32669547).
Cellular Location	Cytoplasm.

Images

Western blot analysis of RPL7A expression in (1) HeLa cell lysate; (2) Raw264.7 cell lysate.



Please note: All products are 'FOR RESEARCH USE ONLY. NOT FOR USE IN DIAGNOSTIC OR THERAPEUTIC PROCEDURES'.