

KLC1 Antibody

Rabbit mAb

Catalog # AP92545

Product Information

Application	WB, IHC, IF, FC, ICC, IP, IHF
Primary Accession	Q07866
Reactivity	Rat, Human, Mouse
Clonality	Monoclonal
Other Names	Kinesin2; KLC; Klc1; KNS2; KNS2A;
Isotype	Rabbit IgG
Host	Rabbit
Calculated MW	65310

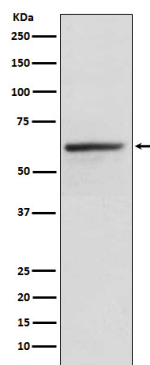
Additional Information

Dilution	WB 1:500~1:2000 IHC 1:50~1:200 ICC/IF 1:50~1:200 IP 1:50 FC 1:50
Purification	Affinity-chromatography
Immunogen	A synthesized peptide derived from human KLC1
Description	Kinesin is a microtubule-associated force-producing protein that may play a role in organelle transport. The light chain may function in coupling of cargo to the heavy chain or in the modulation of its ATPase activity.
Storage Condition and Buffer	Rabbit IgG in phosphate buffered saline , pH 7.4, 150mM NaCl, 0.02% sodium azide and 50% glycerol. Store at +4°C short term. Store at -20°C long term. Avoid freeze / thaw cycle.

Protein Information

Name	KLC1
Synonyms	KLC, KNS2
Function	Kinesin is a microtubule-associated force-producing protein that may play a role in organelle transport (PubMed: 21385839). The light chain may function in coupling of cargo to the heavy chain or in the modulation of its ATPase activity (By similarity).
Cellular Location	Cell projection, growth cone {ECO:0000250 UniProtKB:P37285}. Cytoplasmic vesicle. Cytoplasm, cytoskeleton
Tissue Location	Found in a variety of tissues. Mostly abundant in brain and spine.

Images



Western blot analysis of KLC1 expression in HeLa cell lysate.

Please note: All products are 'FOR RESEARCH USE ONLY. NOT FOR USE IN DIAGNOSTIC OR THERAPEUTIC PROCEDURES'.