

TROY Antibody

Rabbit mAb

Catalog # AP92547

Product Information

Application	WB, IHC, FC
Primary Accession	Q9NS68
Reactivity	Rat, Human, Mouse
Clonality	Monoclonal
Other Names	TAJ alpha; TAJ; TNFRSF19; TRADE; TROY;
Isotype	Rabbit IgG
Host	Rabbit
Calculated MW	46015

Additional Information

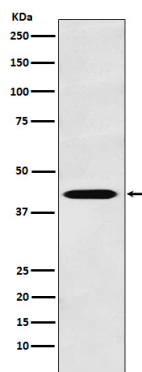
Dilution	WB 1:500~1:2000 IHC 1:50~1:200 FC 1:50
Purification	Affinity-chromatography
Immunogen	A synthesized peptide derived from human TROY
Description	Can mediate activation of JNK and NF-kappa-B. May promote caspase-independent cell death.
Storage Condition and Buffer	Rabbit IgG in phosphate buffered saline , pH 7.4, 150mM NaCl, 0.02% sodium azide and 50% glycerol. Store at +4°C short term. Store at -20°C long term. Avoid freeze / thaw cycle.

Protein Information

Name	TNFRSF19
Synonyms	TAJ, TROY
Function	Can mediate activation of JNK and NF-kappa-B. May promote caspase-independent cell death.
Cellular Location	Membrane; Single-pass type I membrane protein
Tissue Location	Highly expressed in prostate. Detected at lower levels in thymus, spleen, testis, uterus, small intestine, colon and peripheral blood leukocytes

Images

Western blot analysis of TROY expression in LnCaP cell lysate.



Please note: All products are 'FOR RESEARCH USE ONLY. NOT FOR USE IN DIAGNOSTIC OR THERAPEUTIC PROCEDURES'.