

# GAA Antibody

Rabbit mAb

Catalog # AP92550

## Product Information

---

<b>Application</b>	WB
<b>Primary Accession</b>	<a href="#">P10253</a>
<b>Reactivity</b>	Rat, Human, Mouse
<b>Clonality</b>	Monoclonal
<b>Other Names</b>	Acid maltase; GAA; Glucosidase alpha acid; LYAG;
<b>Isotype</b>	Rabbit IgG
<b>Host</b>	Rabbit
<b>Calculated MW</b>	105324

## Additional Information

---

<b>Dilution</b>	WB 1:500~1:2000
<b>Purification</b>	Affinity-chromatography
<b>Immunogen</b>	A synthesized peptide derived from human GAA
<b>Description</b>	Essential for the degradation of glycogen to glucose in lysosomes.
<b>Storage Condition and Buffer</b>	Rabbit IgG in phosphate buffered saline , pH 7.4, 150mM NaCl, 0.02% sodium azide and 50% glycerol. Store at +4°C short term. Store at -20°C long term. Avoid freeze / thaw cycle.

## Protein Information

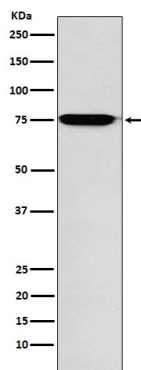
---

<b>Name</b>	GAA
<b>Function</b>	Essential for the degradation of glycogen in lysosomes (PubMed: <a href="#">14695532</a> , PubMed: <a href="#">18429042</a> , PubMed: <a href="#">1856189</a> , PubMed: <a href="#">7717400</a> ). Has highest activity on alpha-1,4-linked glycosidic linkages, but can also hydrolyze alpha-1,6-linked glucans (PubMed: <a href="#">29061980</a> ).
<b>Cellular Location</b>	Lysosome. Lysosome membrane

## Images

---

Western blot analysis of GAA expression in Human fetal liver lysate.



Please note: All products are 'FOR RESEARCH USE ONLY. NOT FOR USE IN DIAGNOSTIC OR THERAPEUTIC PROCEDURES'.