

Kallikrein 5 Antibody

Rabbit mAb

Catalog # AP92563

Product Information

Application	WB, IF, FC, ICC
Primary Accession	Q9Y337
Reactivity	Human, Mouse
Clonality	Monoclonal
Other Names	HK5; Kallikrein 5; Kallikrein L2; KLK 5; KLK L2; SCTE;
Isotype	Rabbit IgG
Host	Rabbit
Calculated MW	32020

Additional Information

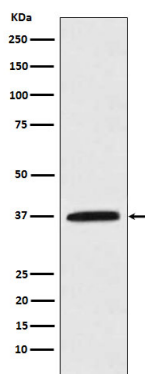
Dilution	WB 1:500~1:2000 ICC/IF 1:50~1:200 FC 1:50
Purification	Affinity-chromatography
Immunogen	A synthesized peptide derived from human Kallikrein 5
Description	May be involved in desquamation.
Storage Condition and Buffer	Rabbit IgG in phosphate buffered saline , pH 7.4, 150mM NaCl, 0.02% sodium azide and 50% glycerol. Store at +4°C short term. Store at -20°C long term. Avoid freeze / thaw cycle.

Protein Information

Name	KLK5 (HGNC:6366)
Function	May be involved in desquamation.
Cellular Location	Secreted.
Tissue Location	Expressed in skin, breast, brain and testis. Expressed at the stratum granulosum of palmar skin

Images

Western blot analysis of Kallikrein 5 expression in MCF-7 cell lysate.



Please note: All products are 'FOR RESEARCH USE ONLY. NOT FOR USE IN DIAGNOSTIC OR THERAPEUTIC PROCEDURES'.