

SERPING1 Antibody

Rabbit mAb

Catalog # AP92590

Product Information

Application	WB, IP
Primary Accession	P05155
Reactivity	Rat, Human, Mouse
Clonality	Monoclonal
Other Names	C1IN; C1Inh; C1NH; HAE1; HAE2;
Isotype	Rabbit IgG
Host	Rabbit
Calculated MW	55154

Additional Information

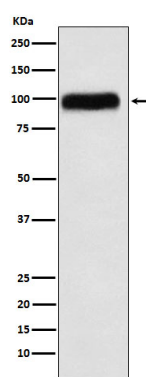
Dilution	WB 1:500~1:2000 IP 1:50
Purification	Affinity-chromatography
Immunogen	A synthesized peptide derived from human SERPING1
Description	Activation of the C1 complex is under control of the C1-inhibitor. It forms a proteolytically inactive stoichiometric complex with the C1r or C1s proteases.
Storage Condition and Buffer	Rabbit IgG in phosphate buffered saline , pH 7.4, 150mM NaCl, 0.02% sodium azide and 50% glycerol. Store at +4°C short term. Store at -20°C long term. Avoid freeze / thaw cycle.

Protein Information

Name	SERPING1
Synonyms	C1IN, C1NH
Function	Serine protease inhibitor, which acts as a regulator of the classical complement pathway (PubMed: 10946292 , PubMed: 11527969 , PubMed: 3458172 , PubMed: 6416294). Forms a proteolytically inactive stoichiometric complex with the C1r or C1s proteases (PubMed: 10946292 , PubMed: 3458172 , PubMed: 6416294). May also regulate blood coagulation, fibrinolysis and the generation of kinins (PubMed: 8495195). Very efficient inhibitor of FXIIa. Inhibits chymotrypsin and kallikrein (PubMed: 8495195).
Cellular Location	Secreted

Images

Western blot analysis of SERPING1 expression in Human



plasma lysate.

Please note: All products are 'FOR RESEARCH USE ONLY. NOT FOR USE IN DIAGNOSTIC OR THERAPEUTIC PROCEDURES'.