

MAT2A Antibody

Rabbit mAb

Catalog # AP92593

Product Information

Application	WB, IF, ICC
Primary Accession	P31153
Reactivity	Rat, Human, Mouse
Clonality	Monoclonal
Other Names	AMS2; MAT 2; MAT 2A; MAT II; Mat2a; MATA2; MATII; SAMS 2; SAMS2;
Isotype	Rabbit IgG
Host	Rabbit
Calculated MW	43661

Additional Information

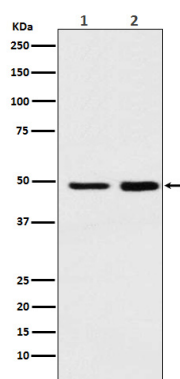
Dilution	WB 1:500~1:2000 ICC/IF 1:50~1:200
Purification	Affinity-chromatography
Immunogen	A synthesized peptide derived from human MAT2A
Description	Catalyzes the formation of S-adenosylmethionine from methionine and ATP.
Storage Condition and Buffer	Rabbit IgG in phosphate buffered saline , pH 7.4, 150mM NaCl, 0.02% sodium azide and 50% glycerol. Store at +4°C short term. Store at -20°C long term. Avoid freeze / thaw cycle.

Protein Information

Name	MAT2A
Synonyms	AMS2, MATA2
Function	Catalyzes the formation of S-adenosylmethionine from methionine and ATP. The reaction comprises two steps that are both catalyzed by the same enzyme: formation of S-adenosylmethionine (AdoMet) and triphosphate, and subsequent hydrolysis of the triphosphate.
Tissue Location	Detected in kidney..

Images

Western blot analysis of MAT2A expression in (1) Ramos cell lysate;(2) Mouse spleen lysate.



Please note: All products are 'FOR RESEARCH USE ONLY. NOT FOR USE IN DIAGNOSTIC OR THERAPEUTIC PROCEDURES'.