

# PCBP1 Antibody

Rabbit mAb

Catalog # AP92594

## Product Information

<b>Application</b>	WB, IP
<b>Primary Accession</b>	<a href="#">Q15365</a>
<b>Reactivity</b>	Rat, Human, Mouse
<b>Clonality</b>	Monoclonal
<b>Other Names</b>	Alpha-CP1; hnRNP E1; HNRPE1; HNRPX; PCBP1;
<b>Isotype</b>	Rabbit IgG
<b>Host</b>	Rabbit
<b>Calculated MW</b>	37498

## Additional Information

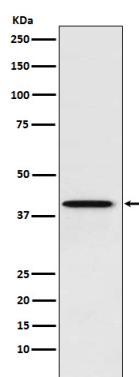
<b>Dilution</b>	WB 1:500~1:2000 IP 1:50
<b>Purification</b>	Affinity-chromatography
<b>Immunogen</b>	A synthesized peptide derived from human PCBP1
<b>Description</b>	Single-stranded nucleic acid binding protein that binds preferentially to oligo dC.
<b>Storage Condition and Buffer</b>	Rabbit IgG in phosphate buffered saline , pH 7.4, 150mM NaCl, 0.02% sodium azide and 50% glycerol. Store at +4°C short term. Store at -20°C long term. Avoid freeze / thaw cycle.

## Protein Information

<b>Name</b>	PCBP1 {ECO:0000303   PubMed:7607214, ECO:0000312   HGNC:HGNC:8647}
<b>Function</b>	Single-stranded nucleic acid binding protein that binds preferentially to oligo dC (PubMed: <a href="#">15731341</a> , PubMed: <a href="#">7556077</a> , PubMed: <a href="#">7607214</a> , PubMed: <a href="#">8152927</a> ). Together with PCBP2, required for erythropoiesis, possibly by regulating mRNA splicing (By similarity).
<b>Cellular Location</b>	Nucleus. Cytoplasm. Note=Loosely bound in the nucleus (PubMed:7607214). May shuttle between the nucleus and the cytoplasm (PubMed:7607214).
<b>Tissue Location</b>	Abundantly expressed in skeletal muscle, thymus and peripheral blood leukocytes while a lower expression is observed in prostate, spleen, testis, ovary, small intestine, heart, liver, adrenal and thyroid glands.

## Images

Western blot analysis of PCBP1 expression in HeLa cell



lysate.

Please note: All products are 'FOR RESEARCH USE ONLY. NOT FOR USE IN DIAGNOSTIC OR THERAPEUTIC PROCEDURES'.