

# PRSS2 Antibody

Rabbit mAb

Catalog # AP92596

## Product Information

---

<b>Application</b>	WB
<b>Primary Accession</b>	<a href="#">P07478</a>
<b>Reactivity</b>	Rat, Human, Mouse
<b>Clonality</b>	Monoclonal
<b>Other Names</b>	Pancreatic anionic trypsinogen; Protease, serine, 2; PRSS2; TRYP8;
<b>Isotype</b>	Rabbit IgG
<b>Host</b>	Rabbit
<b>Calculated MW</b>	26488

## Additional Information

---

<b>Dilution</b>	WB 1:500~1:2000
<b>Purification</b>	Affinity-chromatography
<b>Immunogen</b>	A synthesized peptide derived from human PRSS2
<b>Description</b>	Trypsinogen has been shown to have certain intrinsic activity. It is usually considered, however, as the inactive precursor of trypsin which may be activated by removal of a terminal hexapeptide to yield single chain b trypsin.
<b>Storage Condition and Buffer</b>	Rabbit IgG in phosphate buffered saline , pH 7.4, 150mM NaCl, 0.02% sodium azide and 50% glycerol. Store at +4°C short term. Store at -20°C long term. Avoid freeze / thaw cycle.

## Protein Information

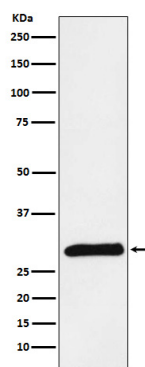
---

<b>Name</b>	PRSS2
<b>Synonyms</b>	TRY2, TRYP2
<b>Function</b>	In the ileum, may be involved in defensin processing, including DEFA5.
<b>Cellular Location</b>	Secreted, extracellular space.
<b>Tissue Location</b>	Expressed in Paneth cells, at the base of small intestinal crypts.

## Images

---

Western blot analysis of PRSS2 expression in Human pancreas lysate.



Please note: All products are 'FOR RESEARCH USE ONLY. NOT FOR USE IN DIAGNOSTIC OR THERAPEUTIC PROCEDURES'.