

STF1 Antibody

Rabbit mAb

Catalog # AP92597

Product Information

| | |
|--------------------------|---|
| Application | WB |
| Primary Accession | Q13285 |
| Reactivity | Rat, Human, Mouse |
| Clonality | Monoclonal |
| Other Names | AD4BP; ELP; FTZ1; FTZF1; hSF 1; NR5A1; POF7; SF1; SPGF8; SRXY3; STF1; |
| Isotype | Rabbit IgG |
| Host | Rabbit |
| Calculated MW | 51636 |

Additional Information

| | |
|-------------------------------------|---|
| Dilution | WB 1:500~1:2000 |
| Purification | Affinity-chromatography |
| Immunogen | A synthesized peptide derived from human STF1 |
| Description | Transcriptional activator. Seems to be essential for sexual differentiation and formation of the primary steroidogenic tissues. Binds to the Ad4 site found in the promoter region of steroidogenic P450 genes such as CYP11A, CYP11B and CYP21B. |
| Storage Condition and Buffer | Rabbit IgG in phosphate buffered saline , pH 7.4, 150mM NaCl, 0.02% sodium azide and 50% glycerol. Store at +4°C short term. Store at -20°C long term. Avoid freeze / thaw cycle. |

Protein Information

| | |
|-----------------|---|
| Name | NR5A1 |
| Synonyms | AD4BP, FTZF1, SF1 |
| Function | Transcriptional activator. Essential for sexual differentiation and formation of the primary steroidogenic tissues (PubMed: 27378692). Binds to the Ad4 site found in the promoter region of steroidogenic P450 genes such as CYP11A, CYP11B and CYP21B. Also regulates the AMH/Muellerian inhibiting substance gene as well as the AHCH and STAR genes. 5'-YCAAGGYC-3' and 5'-RRAGGTCA-3' are the consensus sequences for the recognition by NR5A1 (PubMed: 27378692). The SFPQ-NONO-NR5A1 complex binds to the CYP17 promoter and regulates basal and cAMP-dependent transcriptional activity. Binds phosphatidylcholine (By similarity). Binds phospholipids with a phosphatidylinositol (PI) headgroup, in particular PI(3,4)P2 and PI(3,4,5)P3. Activated by the phosphorylation of NR5A1 by HIPK3 leading to increased steroidogenic gene expression upon cAMP signaling pathway stimulation. |

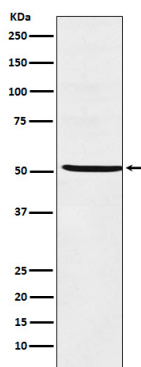
Cellular Location

Nucleus {ECO:0000255 | PROSITE-ProRule:PRU00407,
ECO:0000269 | PubMed:11479297, ECO:0000269 | PubMed:27490115}

Tissue Location

High expressed in the adrenal cortex, the ovary, the testis, and the spleen
(PubMed:9177385)

Images



Western blot analysis of STF1 expression in Jutkat cell lysate.

Please note: All products are 'FOR RESEARCH USE ONLY. NOT FOR USE IN DIAGNOSTIC OR THERAPEUTIC PROCEDURES'.