

ATP1A2 Antibody

Rabbit mAb

Catalog # AP92599

Product Information

Application	WB
Primary Accession	P50993
Reactivity	Rat, Human, Mouse
Clonality	Monoclonal
Other Names	Atp1a2; FHM2; KIAA0778; MHP2;
Isotype	Rabbit IgG
Host	Rabbit
Calculated MW	112265

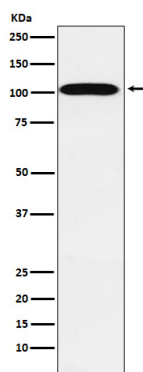
Additional Information

Dilution	WB 1:500~1:2000
Purification	Affinity-chromatography
Immunogen	A synthesized peptide derived from human ATP1A2
Description	This is the catalytic component of the active enzyme, which catalyzes the hydrolysis of ATP coupled with the exchange of sodium and potassium ions across the plasma membrane. This action creates the electrochemical gradient of sodium and potassium, providing the energy for active transport of various nutrients.
Storage Condition and Buffer	Rabbit IgG in phosphate buffered saline , pH 7.4, 150mM NaCl, 0.02% sodium azide and 50% glycerol. Store at +4°C short term. Store at -20°C long term. Avoid freeze / thaw cycle.

Protein Information

Name	ATP1A2
Synonyms	KIAA0778
Function	This is the catalytic component of the active enzyme, which catalyzes the hydrolysis of ATP coupled with the exchange of sodium and potassium ions across the plasma membrane. This action creates the electrochemical gradient of sodium and potassium, providing the energy for active transport of various nutrients.
Cellular Location	Membrane; Multi-pass membrane protein. Cell membrane; Multi-pass membrane protein

Images



Western blot analysis of ATP1A2 expression in Human fetal heart lysate.

Please note: All products are 'FOR RESEARCH USE ONLY. NOT FOR USE IN DIAGNOSTIC OR THERAPEUTIC PROCEDURES'.