

GCYA3 Antibody

Rabbit mAb

Catalog # AP92600

Product Information

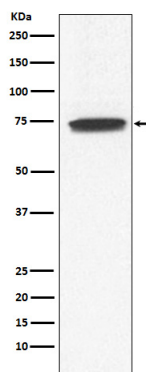
Application	WB
Primary Accession	Q02108
Reactivity	Human
Clonality	Monoclonal
Other Names	GUCY1A3; GC-S-alpha-1; GUC1A3; GUCA3; GCS-alpha-3; GUCY1A1; GC-SA3; GCS-alpha-1; GUCSA3;
Isotype	Rabbit IgG
Host	Rabbit
Calculated MW	73 KDa

Additional Information

Dilution	WB 1:500~1:2000
Purification	Affinity-chromatography
Immunogen	A synthesized peptide derived from human GCYA3
Description	Belongs to the adenylyl cyclase class-4/guanylyl cyclase family. Contains 1 guanylate cyclase domain.
Storage Condition and Buffer	Rabbit IgG in phosphate buffered saline , pH 7.4, 150mM NaCl, 0.02% sodium azide and 50% glycerol. Store at +4°C short term. Store at -20°C long term. Avoid freeze / thaw cycle.

Protein Information

Images



Western blot analysis of GCYA3 expression in Human fetal kidney lysate.

Please note: All products are 'FOR RESEARCH USE ONLY. NOT FOR USE IN DIAGNOSTIC OR THERAPEUTIC PROCEDURES'.