

# JAG2 Antibody

Rabbit mAb

Catalog # AP92602

## Product Information

---

<b>Application</b>	WB
<b>Primary Accession</b>	<a href="#">Q9Y219</a>
<b>Reactivity</b>	Human, Mouse
<b>Clonality</b>	Monoclonal
<b>Other Names</b>	HJ2; JAG2; Jagged2; SER2; Syndactylism;
<b>Isotype</b>	Rabbit IgG
<b>Host</b>	Rabbit
<b>Calculated MW</b>	133367

## Additional Information

---

<b>Dilution</b>	WB 1:500~1:2000
<b>Purification</b>	Affinity-chromatography
<b>Immunogen</b>	A synthesized peptide derived from human JAG2
<b>Description</b>	Jagged 2 is a Notch ligand involved in the mediation of Notch signaling. Jagged 2 is expressed in heart, placenta and skeletal muscle and to a lesser extent in pancreas. Very low expression in brain, lung, liver and kidney.
<b>Storage Condition and Buffer</b>	Rabbit IgG in phosphate buffered saline , pH 7.4, 150mM NaCl, 0.02% sodium azide and 50% glycerol. Store at +4°C short term. Store at -20°C long term. Avoid freeze / thaw cycle.

## Protein Information

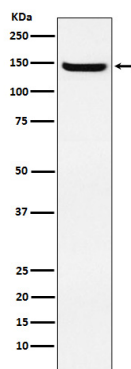
---

<b>Name</b>	JAG2
<b>Function</b>	Putative Notch ligand involved in the mediation of Notch signaling. Involved in limb development (By similarity).
<b>Cellular Location</b>	Membrane; Single-pass type I membrane protein.
<b>Tissue Location</b>	Expressed in heart, placenta and skeletal muscle and to a lesser extent in pancreas. Very low expression in brain, lung, liver and kidney

## Images

---

Western blot analysis of JAG2 expression in HUVEC cell lysate.



Please note: All products are 'FOR RESEARCH USE ONLY. NOT FOR USE IN DIAGNOSTIC OR THERAPEUTIC PROCEDURES'.