

Fetuin A Antibody

Rabbit mAb

Catalog # AP92621

Product Information

Application	WB, IP
Primary Accession	P02765
Reactivity	Human
Clonality	Monoclonal
Other Names	16G2; A2HS; AHS; Ahsg; FETUA; FETUB; FetuinA; FetuinB; Gugu; HSGA; IRL685; PRO2743;
Isotype	Rabbit IgG
Host	Rabbit
Calculated MW	39341

Additional Information

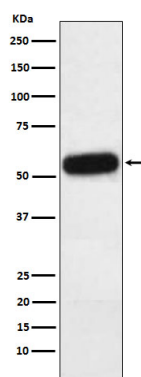
Dilution	WB 1:500~1:2000 IP 1:50
Purification	Affinity-chromatography
Immunogen	A synthesized peptide derived from human Fetuin A
Description	Promotes endocytosis, possesses opsonic properties and influences the mineral phase of bone. Shows affinity for calcium and barium ions.
Storage Condition and Buffer	Rabbit IgG in phosphate buffered saline , pH 7.4, 150mM NaCl, 0.02% sodium azide and 50% glycerol. Store at +4°C short term. Store at -20°C long term. Avoid freeze / thaw cycle.

Protein Information

Name	AHSG
Synonyms	FETUA
Function	Promotes endocytosis, possesses opsonic properties and influences the mineral phase of bone. Shows affinity for calcium and barium ions.
Cellular Location	Secreted.
Tissue Location	Synthesized in liver and selectively concentrated in bone matrix. Secreted in plasma. It is also found in dentin in much higher quantities than other plasma proteins

Images

Western blot analysis of Fetuin A expression in Human



plasma lysate.

Please note: All products are 'FOR RESEARCH USE ONLY. NOT FOR USE IN DIAGNOSTIC OR THERAPEUTIC PROCEDURES'.