

LHX2 Antibody

Rabbit mAb

Catalog # AP92622

Product Information

Application	WB
Primary Accession	P50458
Reactivity	Rat, Human, Mouse
Clonality	Monoclonal
Other Names	hLhx2; LH2; LHX2; LIM homeobox 2;
Isotype	Rabbit IgG
Host	Rabbit
Calculated MW	44373

Additional Information

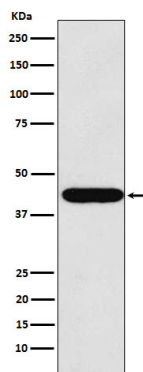
Dilution	WB 1:500~1:2000
Purification	Affinity-chromatography
Immunogen	A synthesized peptide derived from human LHX2
Description	Acts as a transcriptional activator. Stimulates the promoter of the alpha-glycoprotein gene. Transcriptional regulatory protein involved in the control of cell differentiation in developing lymphoid and neural cell types.
Storage Condition and Buffer	Rabbit IgG in phosphate buffered saline , pH 7.4, 150mM NaCl, 0.02% sodium azide and 50% glycerol. Store at +4°C short term. Store at -20°C long term. Avoid freeze / thaw cycle.

Protein Information

Name	LHX2
Synonyms	LH2
Function	Acts as a transcriptional activator. Stimulates the promoter of the alpha-glycoprotein gene. Transcriptional regulatory protein involved in the control of cell differentiation in developing lymphoid and neural cell types (By similarity).
Cellular Location	Nucleus.

Images

Western blot analysis of LHX2 expression in HeLa cell lysate.



Please note: All products are 'FOR RESEARCH USE ONLY. NOT FOR USE IN DIAGNOSTIC OR THERAPEUTIC PROCEDURES'.