

CD1c Antibody

Rabbit mAb

Catalog # AP92623

Product Information

Application	WB
Primary Accession	P29017
Reactivity	Human
Clonality	Monoclonal
Other Names	BDCA1; CD1; CD1A; CD1c;
Isotype	Rabbit IgG
Host	Rabbit
Calculated MW	37654

Additional Information

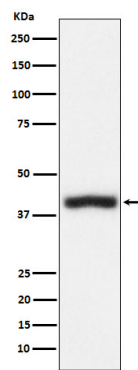
Dilution	WB 1:500~1:2000
Purification	Affinity-chromatography
Immunogen	A synthesized peptide derived from human CD1c
Description	Antigen-presenting protein that binds self and non-self lipid and glycolipid antigens and presents them to T-cell receptors on natural killer T-cells.
Storage Condition and Buffer	Rabbit IgG in phosphate buffered saline , pH 7.4, 150mM NaCl, 0.02% sodium azide and 50% glycerol. Store at +4°C short term. Store at -20°C long term. Avoid freeze / thaw cycle.

Protein Information

Name	CD1C
Function	Antigen-presenting protein that binds self and non-self lipid and glycolipid antigens and presents them to T-cell receptors on natural killer T-cells.
Cellular Location	Cell membrane; Single-pass type I membrane protein. Endosome membrane; Single-pass type I membrane protein Lysosome. Note=Subject to intracellular trafficking between the cell membrane and endosomes
Tissue Location	Expressed on cortical thymocytes, on certain T-cell leukemias, and in various other tissues

Images

Western blot analysis of CD1c expression in Jurkat cell lysate.



Please note: All products are 'FOR RESEARCH USE ONLY. NOT FOR USE IN DIAGNOSTIC OR THERAPEUTIC PROCEDURES'.