

CTNNA3 Antibody

Rabbit mAb

Catalog # AP92632

Product Information

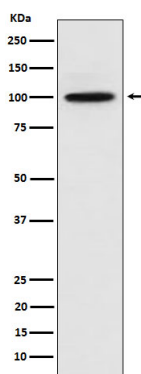
Application	WB, IHC, IP
Primary Accession	Q9UI47
Reactivity	Rat, Human, Mouse
Clonality	Monoclonal
Other Names	Alpha T catenin; Cadherin associated protein; Catenin alpha 3; Catna3; CTNNA3; VR22;
Isotype	Rabbit IgG
Host	Rabbit
Calculated MW	100 KDa

Additional Information

Dilution	WB 1:500~1:2000 IHC 1:50~1:200 IP 1:50
Purification	Affinity-chromatography
Immunogen	A synthesized peptide derived from human CTNNA3
Description	May be involved in formation of stretch-resistant cell-cell adhesion complexes.
Storage Condition and Buffer	Rabbit IgG in phosphate buffered saline , pH 7.4, 150mM NaCl, 0.02% sodium azide and 50% glycerol. Store at +4°C short term. Store at -20°C long term. Avoid freeze / thaw cycle.

Protein Information

Images



Western blot analysis of CTNNA3 expression in 293 cell lysate.

Please note: All products are 'FOR RESEARCH USE ONLY. NOT FOR USE IN DIAGNOSTIC OR THERAPEUTIC PROCEDURES'.