

MBD3 Antibody

Rabbit mAb

Catalog # AP92636

Product Information

Application	WB, IHC, IF, ICC, IHF
Primary Accession	O95983
Reactivity	Rat, Human, Mouse
Clonality	Monoclonal
Other Names	Mbd3; Methyl CpG binding domain protein 3;
Isotype	Rabbit IgG
Host	Rabbit
Calculated MW	32844

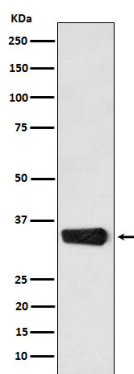
Additional Information

Dilution	WB 1:500~1:2000 IHC 1:50~1:200 ICC/IF 1:50~1:200
Purification	Affinity-chromatography
Immunogen	A synthesized peptide derived from human MBD3
Description	Does not bind DNA by itself. Recruits histone deacetylases and DNA methyltransferases. Acts as transcriptional repressor and plays a role in gene silencing.
Storage Condition and Buffer	Rabbit IgG in phosphate buffered saline , pH 7.4, 150mM NaCl, 0.02% sodium azide and 50% glycerol. Store at +4°C short term. Store at -20°C long term. Avoid freeze / thaw cycle.

Protein Information

Name	MBD3
Function	Acts as a component of the histone deacetylase NuRD complex which participates in the remodeling of chromatin (PubMed: 12124384 , PubMed: 16428440 , PubMed: 28977666). Acts as transcriptional repressor and plays a role in gene silencing (PubMed: 10947852 , PubMed: 18644863). Does not bind to methylated DNA by itself (PubMed: 12124384 , PubMed: 16428440). Binds to a lesser degree DNA containing unmethylated CpG dinucleotides (PubMed: 24307175). Recruits histone deacetylases and DNA methyltransferases.
Cellular Location	Nucleus. Chromosome. Note=Nuclear, in discrete foci. Detected on chromatin, at promoter regions of active genes

Images



Western blot analysis of MBD3 expression in HeLa cell lysate.

Please note: All products are 'FOR RESEARCH USE ONLY. NOT FOR USE IN DIAGNOSTIC OR THERAPEUTIC PROCEDURES'.