

RCHY1 Antibody

Rabbit mAb

Catalog # AP92639

Product Information

Application	WB, IF, ICC, IP
Primary Accession	Q96PM5
Reactivity	Human, Mouse
Clonality	Monoclonal
Other Names	ARNIP; CHIMP; hARNIP; hPirh2; PIRH2E; PIRH2F; RCHY1; RNF199; ZCHY; ZNF363;
Isotype	Rabbit IgG
Host	Rabbit
Calculated MW	30110

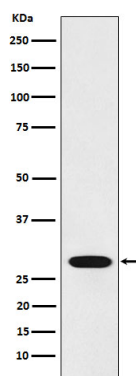
Additional Information

Dilution	WB 1:500~1:2000 ICC/IF 1:50~1:200 IP 1:50
Purification	Affinity-chromatography
Immunogen	A synthesized peptide derived from human RCHY1
Description	Mediates E3-dependent ubiquitination and proteasomal degradation of target proteins, including p53/TP53, HDAC1 and CDKN1B. Preferentially acts on tetrameric p53/TP53.
Storage Condition and Buffer	Rabbit IgG in phosphate buffered saline , pH 7.4, 150mM NaCl, 0.02% sodium azide and 50% glycerol. Store at +4°C short term. Store at -20°C long term. Avoid freeze / thaw cycle.

Protein Information

Name	RCHY1
Function	E3 ubiquitin-protein ligase that mediates ubiquitination of target proteins, including p53/TP53, TP73, HDAC1 and CDKN1B (PubMed: 16914734 , PubMed: 17721809 , PubMed: 18006823 , PubMed: 19043414 , PubMed: 19483087 , PubMed: 21994467). Mediates ubiquitination and degradation of p53/TP53; preferentially acts on tetrameric p53/TP53 (PubMed: 19043414 , PubMed: 19483087). Catalyzes monoubiquitinates the translesion DNA polymerase POLH (PubMed: 21791603). Involved in the ribosome-associated quality control (RQC) pathway, which mediates the extraction of incompletely synthesized nascent chains from stalled ribosomes: RCHY1 acts downstream of NEMF and recognizes CAT tails associated with stalled nascent chains, leading to their ubiquitination and degradation (PubMed: 33909987).
Cellular Location	Nucleus. Nucleus speckle. Cytoplasm

Images



Western blot analysis of RCHY1 expression in 293 cell lysate.

Please note: All products are 'FOR RESEARCH USE ONLY. NOT FOR USE IN DIAGNOSTIC OR THERAPEUTIC PROCEDURES'.