

# BCLG Antibody

Rabbit mAb

Catalog # AP92644

## Product Information

---

<b>Application</b>	WB, IHC, IF, FC, ICC, IP, IHF
<b>Primary Accession</b>	<a href="#">Q9BZR8</a>
<b>Reactivity</b>	Rat, Human, Mouse
<b>Clonality</b>	Monoclonal
<b>Other Names</b>	Apoptosis facilitator Bcl 2 like protein 14; Apoptosis regulator BCL G; Bcl2 L 14; BCL2 like 14; BCL2L14; BCLG; testicular tissue protein Li 26;
<b>Isotype</b>	Rabbit IgG
<b>Host</b>	Rabbit
<b>Calculated MW</b>	36598

## Additional Information

---

<b>Dilution</b>	WB 1:500~1:2000 IHC 1:50~1:200 ICC/IF 1:50~1:200 IP 1:50 FC 1:50
<b>Purification</b>	Affinity-chromatography
<b>Immunogen</b>	A synthesized peptide derived from BCLG
<b>Description</b>	Plays a role in apoptosis.
<b>Storage Condition and Buffer</b>	Rabbit IgG in phosphate buffered saline , pH 7.4, 150mM NaCl, 0.02% sodium azide and 50% glycerol. Store at +4°C short term. Store at -20°C long term. Avoid freeze / thaw cycle.

## Protein Information

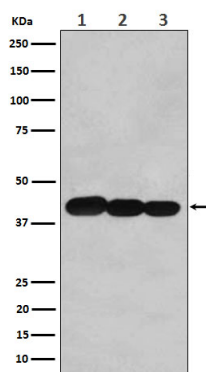
---

<b>Name</b>	BCL2L14
<b>Synonyms</b>	BCLG
<b>Function</b>	Plays a role in apoptosis.
<b>Cellular Location</b>	Cytoplasm. [Isoform 2]: Endomembrane system. Note=Predominantly localized to cytosolic organelles
<b>Tissue Location</b>	Isoform 1 is widely expressed. Isoform 2 is testis- specific.

## Images

---

Western blot analysis of BCLG expression in (1) Hela cell lysate; (2) NIH/3T3 cell lysate; (3) PC12 cell lysate.



Please note: All products are 'FOR RESEARCH USE ONLY. NOT FOR USE IN DIAGNOSTIC OR THERAPEUTIC PROCEDURES'.