

RANBP3 Antibody

Rabbit mAb

Catalog # AP92656

Product Information

Application	WB, IHC, IF, FC, ICC, IP, IHF
Primary Accession	Q9H6Z4
Reactivity	Human, Mouse
Clonality	Monoclonal
Other Names	Ran binding protein 3; RanBP3;
Isotype	Rabbit IgG
Host	Rabbit
Calculated MW	60210

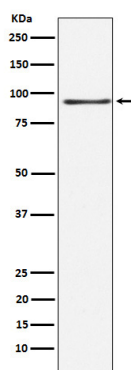
Additional Information

Dilution	WB 1:500~1:2000 IHC 1:50~1:200 ICC/IF 1:50~1:200 IP 1:50 FC 1:50
Purification	Affinity-chromatography
Immunogen	A synthesized peptide derived from RANBP3
Description	Acts as a cofactor for XPO1/CRM1-mediated nuclear export, perhaps as export complex scaffolding protein. Bound to XPO1/CRM1, stabilizes the XPO1/CRM1-cargo interaction.
Storage Condition and Buffer	Rabbit IgG in phosphate buffered saline , pH 7.4, 150mM NaCl, 0.02% sodium azide and 50% glycerol. Store at +4°C short term. Store at -20°C long term. Avoid freeze / thaw cycle.

Protein Information

Name	RANBP3
Function	Acts as a cofactor for XPO1/CRM1-mediated nuclear export, perhaps as export complex scaffolding protein. Bound to XPO1/CRM1, stabilizes the XPO1/CRM1-cargo interaction. In the absence of Ran-bound GTP prevents binding of XPO1/CRM1 to the nuclear pore complex. Binds to CHC1/RCC1 and increases the guanine nucleotide exchange activity of CHC1/RCC1. Recruits XPO1/CRM1 to CHC1/RCC1 in a Ran-dependent manner. Negative regulator of TGF-beta signaling through interaction with the R-SMAD proteins, SMAD2 and SMAD3, and mediating their nuclear export.
Cellular Location	Cytoplasm. Nucleus. Note=Nuclear import is promoted by phosphorylation at Ser-126 and is dependent on KPNA4.
Tissue Location	Widely expressed with high levels in testis and heart.

Images



Western blot analysis of RANBP3 expression in 293 cell lysate.

Please note: All products are 'FOR RESEARCH USE ONLY. NOT FOR USE IN DIAGNOSTIC OR THERAPEUTIC PROCEDURES'.