

MRPL28 Antibody

Rabbit mAb

Catalog # AP92667

Product Information

Application	WB, IF, FC, ICC, IP
Primary Accession	Q13084
Reactivity	Rat, Human, Mouse
Clonality	Monoclonal
Other Names	L28mt; MAAT1; mrpl28; P15;
Isotype	Rabbit IgG
Host	Rabbit
Calculated MW	30157

Additional Information

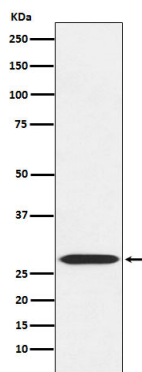
Dilution	WB 1:500~1:2000 ICC/IF 1:50~1:200 IP 1:50 FC 1:50
Purification	Affinity-chromatography
Immunogen	A synthesized peptide derived from MRPL28
Description	Potentially represents an important therapeutic reagent for HLA-A24 patients. This antigen is recognized by tumor-infiltrating lymphocyte (TIL) 1290 in the context of HLA-A24.
Storage Condition and Buffer	Rabbit IgG in phosphate buffered saline , pH 7.4, 150mM NaCl, 0.02% sodium azide and 50% glycerol. Store at +4°C short term. Store at -20°C long term. Avoid freeze / thaw cycle.

Protein Information

Name	MRPL28
Synonyms	MAAT1
Cellular Location	Mitochondrion
Tissue Location	Found in a variety of normal tissues including spleen, testes, thymus, liver, kidney, brain, adrenal, lung and retinal tissue

Images

Western blot analysis of MRPL28 expression in 293 cell lysate.



Please note: All products are 'FOR RESEARCH USE ONLY. NOT FOR USE IN DIAGNOSTIC OR THERAPEUTIC PROCEDURES'.