

SerpinB3 Antibody

Rabbit mAb

Catalog # AP92668

Product Information

Application	WB, IHC, IF, ICC, IHF
Primary Accession	P29508
Reactivity	Human
Clonality	Monoclonal
Other Names	SCC; SCCA; SCCA1; SERPINB3; T4A;
Isotype	Rabbit IgG
Host	Rabbit
Calculated MW	44565

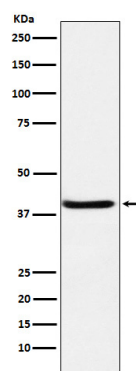
Additional Information

Dilution	WB 1:500~1:2000 IHC 1:50~1:200 ICC/IF 1:50~1:200
Purification	Affinity-chromatography
Immunogen	A synthesized peptide derived from SerpinB3
Description	May act as a protease inhibitor to modulate the host immune response against tumor cells.
Storage Condition and Buffer	Rabbit IgG in phosphate buffered saline , pH 7.4, 150mM NaCl, 0.02% sodium azide and 50% glycerol. Store at +4°C short term. Store at -20°C long term. Avoid freeze / thaw cycle.

Protein Information

Name	SERPINB3
Synonyms	SCCA, SCCA1
Function	May act as a papain-like cysteine protease inhibitor to modulate the host immune response against tumor cells. Also functions as an inhibitor of UV-induced apoptosis via suppression of the activity of c-Jun NH(2)-terminal kinase (JNK1).
Cellular Location	Cytoplasm. Note=Seems to also be secreted in plasma by cancerous cells but at a low level
Tissue Location	Squamous cells. Expressed in some hepatocellular carcinoma (at protein level).

Images



Western blot analysis of SerpinB3 expression in A431 cell lysate.

Please note: All products are 'FOR RESEARCH USE ONLY. NOT FOR USE IN DIAGNOSTIC OR THERAPEUTIC PROCEDURES'.