

CTBP2 Antibody

Rabbit mAb

Catalog # AP92670

Product Information

Application	WB, IHC, IF, ICC, IHF
Primary Accession	P56545
Reactivity	Rat, Human, Mouse
Clonality	Monoclonal
Other Names	CtBP2; ribeye;
Isotype	Rabbit IgG
Host	Rabbit
Calculated MW	48945

Additional Information

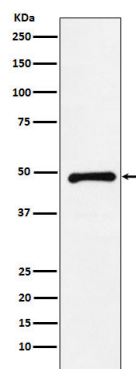
Dilution	WB 1:500~1:2000 IHC 1:50~1:200 ICC/IF 1:50~1:200
Purification	Affinity-chromatography
Immunogen	A synthesized peptide derived from CTBP2
Description	Corepressor targeting diverse transcription regulators. Functions in brown adipose tissue (BAT) differentiation. Isoform 2 probably acts as a scaffold for specialized synapses.
Storage Condition and Buffer	Rabbit IgG in phosphate buffered saline , pH 7.4, 150mM NaCl, 0.02% sodium azide and 50% glycerol. Store at +4°C short term. Store at -20°C long term. Avoid freeze / thaw cycle.

Protein Information

Name	CTBP2
Function	Corepressor targeting diverse transcription regulators. Functions in brown adipose tissue (BAT) differentiation (By similarity).
Cellular Location	Nucleus. Synapse.
Tissue Location	Ubiquitous. Highest levels in heart, skeletal muscle, and pancreas

Images

Western blot analysis of CTBP2 expression in HeLa cell lysate.



Please note: All products are 'FOR RESEARCH USE ONLY. NOT FOR USE IN DIAGNOSTIC OR THERAPEUTIC PROCEDURES'.