

Collagen III Antibody

Rabbit mAb

Catalog # AP92678

Product Information

Application	WB, IF, FC, ICC, IP
Primary Accession	P02461
Reactivity	Rat, Human, Mouse
Clonality	Monoclonal
Other Names	Alpha 1 type III collagen; COL3A1; Collagen III alpha 1 chain precursor; Collagen type III alpha ; EDS4A; Fetal collagen; Type III collagen;
Isotype	Rabbit IgG
Host	Rabbit
Calculated MW	138564

Additional Information

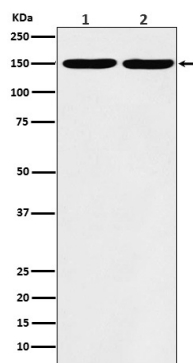
Dilution	WB 1:500~1:2000 ICC/IF 1:50~1:200 IP 1:50 FC 1:50
Purification	Affinity-chromatography
Immunogen	A synthesized peptide derived from Collagen III
Description	Collagen type III occurs in most soft connective tissues along with type I collagen.
Storage Condition and Buffer	Rabbit IgG in phosphate buffered saline , pH 7.4, 150mM NaCl, 0.02% sodium azide and 50% glycerol. Store at +4°C short term. Store at -20°C long term. Avoid freeze / thaw cycle.

Protein Information

Name	COL3A1
Function	Collagen type III occurs in most soft connective tissues along with type I collagen. Involved in regulation of cortical development. Is the major ligand of ADGRG1 in the developing brain and binding to ADGRG1 inhibits neuronal migration and activates the RhoA pathway by coupling ADGRG1 to GNA13 and possibly GNA12.
Cellular Location	Secreted, extracellular space, extracellular matrix {ECO:0000255 PROSITE-ProRule:PRU00793}

Images

Western blot analysis of Collagen III expression in (1)
A431 cell lysate; (2) MCF7 cell lysate.



Please note: All products are 'FOR RESEARCH USE ONLY. NOT FOR USE IN DIAGNOSTIC OR THERAPEUTIC PROCEDURES'.