

Olig3 Antibody

Rabbit mAb

Catalog # AP92685

Product Information

Application	WB, IF, ICC
Primary Accession	Q7RTU3
Reactivity	Human
Clonality	Monoclonal
Other Names	bHLHB7; bHLHe20; Olig3; Oligo3;
Isotype	Rabbit IgG
Host	Rabbit
Calculated MW	29358

Additional Information

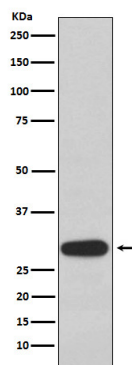
Dilution	WB 1:500~1:2000 ICC/IF 1:50~1:200
Purification	Affinity-chromatography
Immunogen	A synthesized peptide derived from human Olig3
Description	May determine the distinct specification program of class A neurons in the dorsal part of the spinal cord and suppress specification of class B neurons.
Storage Condition and Buffer	Rabbit IgG in phosphate buffered saline , pH 7.4, 150mM NaCl, 0.02% sodium azide and 50% glycerol. Store at +4°C short term. Store at -20°C long term. Avoid freeze / thaw cycle.

Protein Information

Name	OLIG3
Synonyms	BHLHB7, BHLHE20
Function	May determine the distinct specification program of class A neurons in the dorsal part of the spinal cord and suppress specification of class B neurons.
Cellular Location	Nucleus {ECO:0000255 PROSITE-ProRule:PRU00981}.

Images

Western blot analysis of Olig3 expression in 293T cell lysate.



Please note: All products are 'FOR RESEARCH USE ONLY. NOT FOR USE IN DIAGNOSTIC OR THERAPEUTIC PROCEDURES'.