

# SNRPA1 Antibody

Rabbit mAb

Catalog # AP92693

## Product Information

---

<b>Application</b>	WB, IHC
<b>Primary Accession</b>	<a href="#">P09661</a>
<b>Reactivity</b>	Rat, Human, Mouse
<b>Clonality</b>	Monoclonal
<b>Other Names</b>	Lea1; SNRPA1;
<b>Isotype</b>	Rabbit IgG
<b>Host</b>	Rabbit
<b>Calculated MW</b>	28416

## Additional Information

---

<b>Dilution</b>	WB 1:500~1:2000 IHC 1:50~1:200
<b>Purification</b>	Affinity-chromatography
<b>Immunogen</b>	A synthesized peptide derived from human SNRPA1
<b>Description</b>	This protein is associated with sn-RNP U2. It helps the A' protein to bind stem loop IV of U2 snRNA.
<b>Storage Condition and Buffer</b>	Rabbit IgG in phosphate buffered saline , pH 7.4, 150mM NaCl, 0.02% sodium azide and 50% glycerol. Store at +4°C short term. Store at -20°C long term. Avoid freeze / thaw cycle.

## Protein Information

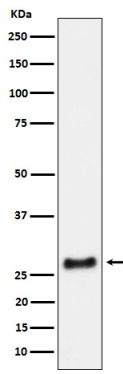
---

<b>Name</b>	SNRPA1
<b>Function</b>	Involved in pre-mRNA splicing as component of the spliceosome (PubMed: <a href="#">11991638</a> , PubMed: <a href="#">27035939</a> , PubMed: <a href="#">28076346</a> , PubMed: <a href="#">28502770</a> , PubMed: <a href="#">28781166</a> , PubMed: <a href="#">32494006</a> ). Associated with sn-RNP U2, where it contributes to the binding of stem loop IV of U2 snRNA (PubMed: <a href="#">27035939</a> , PubMed: <a href="#">32494006</a> , PubMed: <a href="#">9716128</a> ).
<b>Cellular Location</b>	Nucleus

## Images

---

Western blot analysis of SNRPA1 expression in HeLa cell lysate.



Please note: All products are 'FOR RESEARCH USE ONLY. NOT FOR USE IN DIAGNOSTIC OR THERAPEUTIC PROCEDURES'.