

# SBDS Antibody

Rabbit mAb

Catalog # AP92701

## Product Information

<b>Application</b>	WB
<b>Primary Accession</b>	<a href="#">Q9Y3A5</a>
<b>Reactivity</b>	Rat, Human, Mouse
<b>Clonality</b>	Monoclonal
<b>Other Names</b>	CGI 97; sbds; SDS; SWDS;
<b>Isotype</b>	Rabbit IgG
<b>Host</b>	Rabbit
<b>Calculated MW</b>	28764

## Additional Information

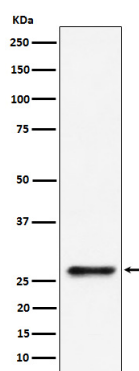
<b>Dilution</b>	WB 1:500~1:2000
<b>Purification</b>	Affinity-chromatography
<b>Immunogen</b>	A synthesized peptide derived from human SBDS
<b>Description</b>	Required for the assembly of mature ribosomes and ribosome biogenesis.
<b>Storage Condition and Buffer</b>	Rabbit IgG in phosphate buffered saline , pH 7.4, 150mM NaCl, 0.02% sodium azide and 50% glycerol. Store at +4°C short term. Store at -20°C long term. Avoid freeze / thaw cycle.

## Protein Information

<b>Name</b>	SBDS
<b>Function</b>	Required for the assembly of mature ribosomes and ribosome biogenesis. Together with EFL1, triggers the GTP-dependent release of EIF6 from 60S pre-ribosomes in the cytoplasm, thereby activating ribosomes for translation competence by allowing 80S ribosome assembly and facilitating EIF6 recycling to the nucleus, where it is required for 60S rRNA processing and nuclear export. Required for normal levels of protein synthesis. May play a role in cellular stress resistance. May play a role in cellular response to DNA damage. May play a role in cell proliferation.
<b>Cellular Location</b>	Cytoplasm. Nucleus, nucleolus. Nucleus, nucleoplasm. Cytoplasm, cytoskeleton, spindle. Note=Primarily detected in the cytoplasm, and at low levels in nucleus and nucleolus (PubMed:17475909, PubMed:19602484). Detected in the nucleolus during G1 and G2 phase of the cell cycle, and diffusely distributed in the nucleus during S phase. Detected at the mitotic spindle. Colocalizes with the microtubule organizing center during interphase (PubMed:19759903).
<b>Tissue Location</b>	Widely expressed.

## Images

---



Western blot analysis of SBDS expression in 293 cell lysate.

Please note: All products are 'FOR RESEARCH USE ONLY. NOT FOR USE IN DIAGNOSTIC OR THERAPEUTIC PROCEDURES'.