

CHD3 Antibody

Rabbit mAb

Catalog # AP92702

Product Information

Application	WB, IHC, IF, FC, ICC, IHF
Primary Accession	Q12873
Reactivity	Human
Clonality	Monoclonal
Other Names	Chd3; Chd7; hZFH; Mi2 ALPHA; Prp7; Prp9 1; ZFH;
Isotype	Rabbit IgG
Host	Rabbit
Calculated MW	226592

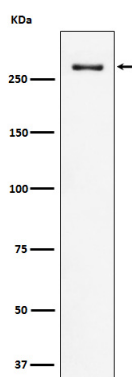
Additional Information

Dilution	WB 1:500~1:2000 IHC 1:50~1:200 ICC/IF 1:50~1:200 FC 1:50
Purification	Affinity-chromatography
Immunogen	A synthesized peptide derived from human CHD3
Description	Component of the histone deacetylase NuRD complex which participates in the remodeling of chromatin by deacetylating histones. Required for anchoring centrosomal pericentrin in both interphase and mitosis, for spindle organization and centrosome integrity.
Storage Condition and Buffer	Rabbit IgG in phosphate buffered saline , pH 7.4, 150mM NaCl, 0.02% sodium azide and 50% glycerol. Store at +4°C short term. Store at -20°C long term. Avoid freeze / thaw cycle.

Protein Information

Name	CHD3
Function	ATP-dependent chromatin-remodeling factor that binds and distorts nucleosomal DNA (PubMed: 28977666). Acts as a component of the histone deacetylase NuRD complex which participates in the remodeling of chromatin (PubMed: 16428440 , PubMed: 28977666 , PubMed: 30397230 , PubMed: 9804427). Involved in transcriptional repression as part of the NuRD complex (PubMed: 27068747). Required for anchoring centrosomal pericentrin in both interphase and mitosis, for spindle organization and centrosome integrity (PubMed: 17626165).
Cellular Location	Nucleus, PML body. Nucleus. Cytoplasm, cytoskeleton, microtubule organizing center, centrosome Note=Associates with centrosomes in interphase and mitosis (PubMed: 17626165). Localizes to sites of DNA damage (PubMed: 28977666)
Tissue Location	Widely expressed.

Images



Western blot analysis of CHD3 expression in HeLa cell lysate.

Please note: All products are 'FOR RESEARCH USE ONLY. NOT FOR USE IN DIAGNOSTIC OR THERAPEUTIC PROCEDURES'.