

TUB1 Antibody

Rabbit mAb

Catalog # AP92726

Product Information

Application	WB, IHC
Primary Accession	P50607
Reactivity	Rat, Human, Mouse
Clonality	Monoclonal
Other Names	rd5; TUB 1; TUB;

Isotype	Rabbit IgG
Host	Rabbit
Calculated MW	55651

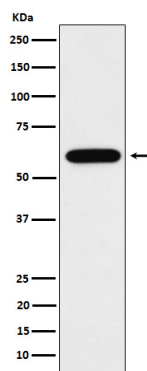
Additional Information

Dilution	WB 1:500~1:2000 IHC 1:50~1:200
Purification	Affinity-chromatography
Immunogen	A synthesized peptide derived from human TUB1
Description	Functions in signal transduction from heterotrimeric G protein-coupled receptors. Binds to membranes containing phosphatidylinositol 4,5-bisphosphate.
Storage Condition and Buffer	Rabbit IgG in phosphate buffered saline , pH 7.4, 150mM NaCl, 0.02% sodium azide and 50% glycerol. Store at +4°C short term. Store at -20°C long term. Avoid freeze / thaw cycle.

Protein Information

Name	TUB
Function	Functions in signal transduction from heterotrimeric G protein-coupled receptors. Binds to membranes containing phosphatidylinositol 4,5-bisphosphate. Can bind DNA (in vitro). May contribute to the regulation of transcription in the nucleus. Could be involved in the hypothalamic regulation of body weight (By similarity). Contribute to stimulation of phagocytosis of apoptotic retinal pigment epithelium (RPE) cells and macrophages.
Cellular Location	Cytoplasm. Nucleus. Secreted. Cell membrane; Peripheral membrane protein; Cytoplasmic side Note=Binds phospholipid and is anchored to the plasma membrane through binding phosphatidylinositol 4,5-bisphosphate. Is released upon activation of phospholipase C. Translocates from the plasma membrane to the nucleus upon activation of guanine nucleotide-binding protein G(q) subunit alpha. Does not have a cleavable signal peptide and is secreted by a non-conventional pathway (By similarity).

Images



Western blot analysis of TUB1 expression in Neuro-2a cell lysate.

Please note: All products are 'FOR RESEARCH USE ONLY. NOT FOR USE IN DIAGNOSTIC OR THERAPEUTIC PROCEDURES'.