

Prostein Antibody

Rabbit mAb

Catalog # AP92732

Product Information

Application	WB, IHC
Primary Accession	Q96JT2
Reactivity	Human
Clonality	Monoclonal
Other Names	IPCA6; PCANAP2; PCANAP6; PCANAP8; Prostein; PRST; Slc45a3;
Isotype	Rabbit IgG
Host	Rabbit
Calculated MW	59323

Additional Information

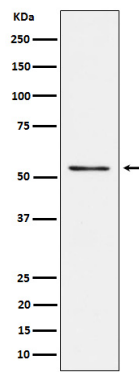
Dilution	WB 1:500~1:2000 IHC 1:50~1:200
Purification	Affinity-chromatography
Immunogen	A synthesized peptide derived from human Prostein
Description	Marker for prostate cells. May be used, in case of prostate cancers, as a target antigen for prostate carcinomas-directed cytotoxic T-cell lymphocytes.
Storage Condition and Buffer	Rabbit IgG in phosphate buffered saline , pH 7.4, 150mM NaCl, 0.02% sodium azide and 50% glycerol. Store at +4°C short term. Store at -20°C long term. Avoid freeze / thaw cycle.

Protein Information

Name	SLC45A3 (HGNC:8642)
Synonyms	PCANAP6, PRST
Function	Proton-associated sucrose transporter. May be able to transport also glucose and fructose.
Cellular Location	Membrane; Multi-pass membrane protein
Tissue Location	Prostate specific. Expressed in all prostatic glandular cells. Expressed both in normal and cancerous prostates

Images

Western blot analysis of Prostein expression in LnCaP cell lysate.



Please note: All products are 'FOR RESEARCH USE ONLY. NOT FOR USE IN DIAGNOSTIC OR THERAPEUTIC PROCEDURES'.