

GSTO1 Antibody

Rabbit mAb

Catalog # AP92734

Product Information

Application	WB, IF, ICC
Primary Accession	P78417
Reactivity	Human
Clonality	Monoclonal
Other Names	Gsto1; GSTTLp28; GSTX; Gtsttl; p28;
Isotype	Rabbit IgG
Host	Rabbit
Calculated MW	27566

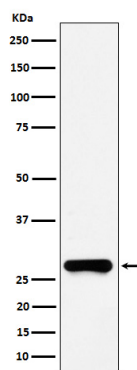
Additional Information

Dilution	WB 1:500~1:2000 ICC/IF 1:50~1:200
Purification	Affinity-chromatography
Immunogen	A synthesized peptide derived from human GSTO1
Description	Exhibits glutathione-dependent thiol transferase and dehydroascorbate reductase activities. Has S-(phenacyl)glutathione reductase activity.
Storage Condition and Buffer	Rabbit IgG in phosphate buffered saline , pH 7.4, 150mM NaCl, 0.02% sodium azide and 50% glycerol. Store at +4°C short term. Store at -20°C long term. Avoid freeze / thaw cycle.

Protein Information

Name	GSTO1
Synonyms	GSTTLP28
Function	Exhibits glutathione-dependent thiol transferase and dehydroascorbate reductase activities. Has S-(phenacyl)glutathione reductase activity. Also has glutathione S-transferase activity. Participates in the biotransformation of inorganic arsenic and reduces monomethylarsonic acid (MMA) and dimethylarsonic acid.
Cellular Location	Cytoplasm, cytosol.
Tissue Location	Ubiquitous. Highest expression in liver, pancreas, skeletal muscle, spleen, thymus, colon, blood leukocyte and heart Lowest expression in brain, placenta and lung

Images



Western blot analysis of GSTO1 expression in HeLa cell lysate.

Please note: All products are 'FOR RESEARCH USE ONLY. NOT FOR USE IN DIAGNOSTIC OR THERAPEUTIC PROCEDURES'.