

TUG Antibody

Rabbit mAb

Catalog # AP92737

Product Information

Application	WB, IHC
Primary Accession	Q9BZE9
Reactivity	Rat, Human, Mouse
Clonality	Monoclonal
Other Names	ASPC; ASPCR1; ASPL; ASPS; Aspscr1; RCC17; TUG; UBXD9; UBXN9;
Isotype	Rabbit IgG
Host	Rabbit
Calculated MW	60183

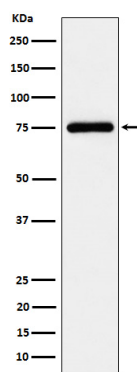
Additional Information

Dilution	WB 1:500~1:2000 IHC 1:50~1:200
Purification	Affinity-chromatography
Immunogen	A synthesized peptide derived from human TUG
Description	Tethering protein that sequesters GLUT4-containing vesicles in the cytoplasm in the absence of insulin. Modulates the amount of GLUT4 that is available at the cell surface.
Storage Condition and Buffer	Rabbit IgG in phosphate buffered saline , pH 7.4, 150mM NaCl, 0.02% sodium azide and 50% glycerol. Store at +4°C short term. Store at -20°C long term. Avoid freeze / thaw cycle.

Protein Information

Name	ASPC1
Synonyms	ASPL, RCC17, TUG, UBXD9, UBXN9
Function	Tethering protein that sequesters GLUT4-containing vesicles in the cytoplasm in the absence of insulin. Modulates the amount of GLUT4 that is available at the cell surface (By similarity). Enhances VCP methylation catalyzed by VCPKMT.
Cellular Location	Endomembrane system; Peripheral membrane protein. Endoplasmic reticulum-Golgi intermediate compartment membrane; Peripheral membrane protein. Cytoplasm Nucleus
Tissue Location	Ubiquitous. Highly expressed in testis, heart, skeletal muscle and pancreas.

Images



Western blot analysis of TUG expression in K562 cell lysate.

Please note: All products are 'FOR RESEARCH USE ONLY. NOT FOR USE IN DIAGNOSTIC OR THERAPEUTIC PROCEDURES'.