

SRP19 Antibody

Rabbit mAb

Catalog # AP92740

Product Information

Application	WB, IHC, IF, ICC, IHF
Primary Accession	P09132
Reactivity	Rat, Human, Mouse
Clonality	Monoclonal
Other Names	SRP19;
Isotype	Rabbit IgG
Host	Rabbit
Calculated MW	16156

Additional Information

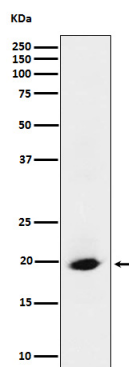
Dilution	WB 1:500~1:2000 IHC 1:50~1:200 ICC/IF 1:50~1:200
Purification	Affinity-chromatography
Immunogen	A synthesized peptide derived from human SRP19
Description	Signal-recognition-particle assembly, binds directly to 7S RNA and mediates binding of the 54 kDa subunit of the SRP.
Storage Condition and Buffer	Rabbit IgG in phosphate buffered saline , pH 7.4, 150mM NaCl, 0.02% sodium azide and 50% glycerol. Store at +4°C short term. Store at -20°C long term. Avoid freeze / thaw cycle.

Protein Information

Name	SRP19
Function	Component of the signal recognition particle (SRP) complex, a ribonucleoprotein complex that mediates the cotranslational targeting of secretory and membrane proteins to the endoplasmic reticulum (ER) (By similarity). Binds directly to 7SL RNA (By similarity). Mediates binding of SRP54 to the SRP complex (By similarity).
Cellular Location	Cytoplasm. Nucleus, nucleolus. Nucleus, nucleoplasm. Note=Although the signal recognition particle complex acts in the cytoplasm, it assembles at least in part in the nucleus and/or the nucleolus. SRP19 nuclear import may be mediated by IPO8/Imp8 and TPNO1/Trn

Images

Western blot analysis of SRP19 expression in HeLa cell lysate.



Please note: All products are 'FOR RESEARCH USE ONLY. NOT FOR USE IN DIAGNOSTIC OR THERAPEUTIC PROCEDURES'.