

IL15RA Antibody

Rabbit mAb

Catalog # AP92745

Product Information

Application	WB, IF, ICC
Primary Accession	Q13261
Reactivity	Human
Clonality	Monoclonal
Other Names	CD215; IL 15R alpha; IL-15 receptor subunit alpha; IL-15R-alpha; IL-15RA; IL15ra; Interleukin 15 receptor alpha; sIL-15 receptor subunit alpha; sIL-15R-alpha; sIL-15RA ; Soluble interleukin 15 receptor subunit alpha;
Isotype	Rabbit IgG
Host	Rabbit
Calculated MW	28233

Additional Information

Dilution	WB 1:500~1:2000 ICC/IF 1:50~1:200
Purification	Affinity-chromatography
Immunogen	A synthesized peptide derived from human IL15RA
Description	Receptor for interleukin-15. Expression of different isoforms may alter or interfere with signal transduction. Isoform 5, isoform 6, isoform 7 and isoform 8 do not bind IL15. Signal transduction involves STAT3, STAT5, STAT6, JAK2 (By similarity) and SYK.
Storage Condition and Buffer	Rabbit IgG in phosphate buffered saline , pH 7.4, 150mM NaCl, 0.02% sodium azide and 50% glycerol. Store at +4°C short term. Store at -20°C long term. Avoid freeze / thaw cycle.

Protein Information

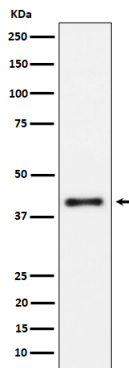
Name	IL15RA
Function	High-affinity receptor for interleukin-15 (PubMed: 8530383). Can signal both in cis and trans where IL15R from one subset of cells presents IL15 to neighboring IL2RG-expressing cells (By similarity). In neutrophils, binds and activates kinase SYK in response to IL15 stimulation (PubMed: 15123770). In neutrophils, required for IL15- induced phagocytosis in a SYK-dependent manner (PubMed: 15123770). Expression of different isoforms may alter or interfere with signal transduction (PubMed: 10480910).
Cellular Location	Membrane; Single- pass type I membrane protein. Nucleus membrane; Single-pass type I membrane protein. Cell surface. Note=Mainly found associated with the nuclear membrane [Isoform 6]: Endoplasmic reticulum membrane; Single-pass type I membrane protein. Golgi apparatus membrane; Single- pass type I membrane protein. Cytoplasmic vesicle

membrane; Single-pass type I membrane protein. Membrane; Single-pass type I membrane protein Note=Isoform 5, isoform 6, isoform 7 and isoform 8 are associated with endoplasmic reticulum, Golgi and cytoplasmic vesicles, but not with the nuclear membrane [Isoform 8]; Endoplasmic reticulum membrane; Single-pass type I membrane protein. Golgi apparatus membrane; Single-pass type I membrane protein. Cytoplasmic vesicle membrane; Single-pass type I membrane protein. Membrane; Single-pass type I membrane protein Note=Isoform 5, isoform 6, isoform 7 and isoform 8 are associated with endoplasmic reticulum, Golgi and cytoplasmic vesicles, but not with the nuclear membrane

Tissue Location

Expressed in neutrophils (at protein level) (PubMed:15123770). Expressed in fetal brain with higher expression in the hippocampus and cerebellum than in cortex and thalamus (PubMed:12114302). Higher levels of soluble sIL-15RA form in comparison with membrane-bound forms is present in all brain structures (PubMed:12114302). Isoforms 1, 3, 4, 5, 6, 7, 8 and 9: Widely expressed (PubMed:10480910, PubMed:8530383).

Images



Western blot analysis of IL15RA expression in Raji cell lysate.

Please note: All products are 'FOR RESEARCH USE ONLY. NOT FOR USE IN DIAGNOSTIC OR THERAPEUTIC PROCEDURES'.