

RASA1 Antibody

Rabbit mAb

Catalog # AP92746

Product Information

Application	WB, IHC
Primary Accession	P20936
Reactivity	Rat, Human
Clonality	Monoclonal
Other Names	CMAVM; GAP; p120GAP; p120RASGAP; PKWS; RASA; RASA1; RasGAP;
Isotype	Rabbit IgG
Host	Rabbit
Calculated MW	116403

Additional Information

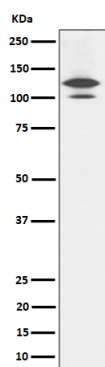
Dilution	WB 1:500~1:2000 IHC 1:50~1:200
Purification	Affinity-chromatography
Immunogen	A synthesized peptide derived from human RASA1
Description	Inhibitory regulator of the Ras-cyclic AMP pathway. Stimulates the GTPase of normal but not oncogenic Ras p21.
Storage Condition and Buffer	Rabbit IgG in phosphate buffered saline , pH 7.4, 150mM NaCl, 0.02% sodium azide and 50% glycerol. Store at +4°C short term. Store at -20°C long term. Avoid freeze / thaw cycle.

Protein Information

Name	RASA1
Synonyms	GAP, RASA
Function	Inhibitory regulator of the Ras-cyclic AMP pathway. Stimulates the GTPase of normal but not oncogenic Ras p21; this stimulation may be further increased in the presence of NCK1.
Cellular Location	Cytoplasm.
Tissue Location	In placental villi, detected only in the trophoblast layer (cytotrophoblast and syncytiotrophoblast). Not detected in stromal, endothelial or Hofbauer cells (at protein level)

Images

Western blot analysis of RASA1 expression in Rat brain



cell lysate.

Please note: All products are 'FOR RESEARCH USE ONLY. NOT FOR USE IN DIAGNOSTIC OR THERAPEUTIC PROCEDURES'.