

ORP1 Antibody

Rabbit mAb

Catalog # AP92749

Product Information

Application	WB, IF, FC, ICC
Primary Accession	Q9BXW6
Reactivity	Rat, Human, Mouse
Clonality	Monoclonal
Other Names	ORP1; OSBP8; OSBPL1; OSBPL1A; OSBPL1B;
Isotype	Rabbit IgG
Host	Rabbit
Calculated MW	108470

Additional Information

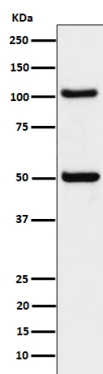
Dilution	WB 1:500~1:2000 ICC/IF 1:50~1:200 FC 1:50
Purification	Affinity-chromatography
Immunogen	A synthesized peptide derived from human ORP1
Description	Binds phospholipids; exhibits strong binding to phosphatidic acid and weak binding to phosphatidylinositol 3-phosphate.
Storage Condition and Buffer	Rabbit IgG in phosphate buffered saline , pH 7.4, 150mM NaCl, 0.02% sodium azide and 50% glycerol. Store at +4°C short term. Store at -20°C long term. Avoid freeze / thaw cycle.

Protein Information

Name	OSBPL1A (HGNC:16398)
Function	Binds phospholipids; exhibits strong binding to phosphatidic acid and weak binding to phosphatidylinositol 3-phosphate (By similarity). Stabilizes GTP-bound RAB7A on late endosomes/lysosomes and alters functional properties of late endocytic compartments via its interaction with RAB7A (PubMed: 16176980). Binds 25-hydroxycholesterol and cholesterol (PubMed: 17428193).
Cellular Location	Late endosome. Note=Colocalizes with RAB7A, RAB9A and LAMP1 in late endosomes

Images

Western blot analysis of ORP1 expression in 293 cell lysate.



Please note: All products are 'FOR RESEARCH USE ONLY. NOT FOR USE IN DIAGNOSTIC OR THERAPEUTIC PROCEDURES'.