

# C19orf26 Antibody (Center)

Affinity Purified Rabbit Polyclonal Antibody (Pab)

Catalog # AP9274c

## Product Information

---

<b>Application</b>	WB, FC, E
<b>Primary Accession</b>	<a href="#">Q8N350</a>
<b>Reactivity</b>	Human
<b>Host</b>	Rabbit
<b>Clonality</b>	Polyclonal
<b>Isotype</b>	Rabbit IgG
<b>Clone Names</b>	RB23074
<b>Calculated MW</b>	73929
<b>Antigen Region</b>	423-450

## Additional Information

---

<b>Gene ID</b>	255057
<b>Other Names</b>	Protein Dos, DOS, C19orf26
<b>Target/Specificity</b>	This C19orf26 antibody is generated from rabbits immunized with a KLH conjugated synthetic peptide between 423-450 amino acids from the Central region of human C19orf26.
<b>Dilution</b>	WB~~1:1000 FC~~1:10~50 E~~Use at an assay dependent concentration.
<b>Format</b>	Purified polyclonal antibody supplied in PBS with 0.09% (W/V) sodium azide. This antibody is purified through a protein A column, followed by peptide affinity purification.
<b>Storage</b>	Maintain refrigerated at 2-8°C for up to 2 weeks. For long term storage store at -20°C in small aliquots to prevent freeze-thaw cycles.
<b>Precautions</b>	C19orf26 Antibody (Center) is for research use only and not for use in diagnostic or therapeutic procedures.

## Protein Information

---

<b>Name</b>	CBARP ( <a href="#">HGNC:28617</a> )
<b>Function</b>	Negatively regulates voltage-gated calcium channels by preventing the interaction between their alpha and beta subunits. Thereby, negatively regulates calcium channels activity at the plasma membrane and indirectly inhibits calcium-regulated exocytosis.

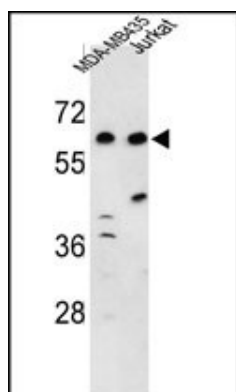
## Cellular Location

Cytoplasmic vesicle, secretory vesicle, synaptic vesicle membrane {ECO:0000250|UniProtKB:Q66L44}; Single-pass type III membrane protein {ECO:0000250|UniProtKB:Q66L44}. Cell membrane {ECO:0000250|UniProtKB:Q66L44}; Single-pass type III membrane protein {ECO:0000250|UniProtKB:Q66L44}. Cell projection, growth cone {ECO:0000250|UniProtKB:Q66L44}

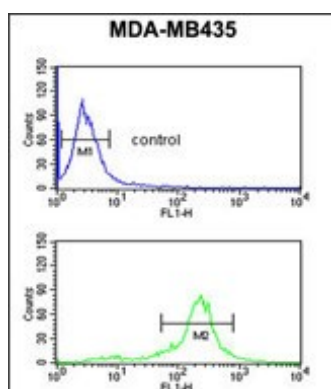
## References

Olsen,J.V., et.al., Cell 127 (3), 635-648 (2006)  
Grimwood,J., et.al., Nature 428 (6982), 529-535 (2004)

## Images



Western blot analysis of C19orf26 Antibody (Center)(Cat. #AP9274c) in MDA-MB435, Jurkat cell line lysates (35ug/lane). C19orf26 (arrow) was detected using the purified Pab.



C19orf26 Antibody (Center) (Cat. #AP9274c) flow cytometric analysis of MDA-MB435 cells (bottom histogram) compared to a negative control cell (top histogram).FITC-conjugated goat-anti-rabbit secondary antibodies were used for the analysis.

Please note: All products are 'FOR RESEARCH USE ONLY. NOT FOR USE IN DIAGNOSTIC OR THERAPEUTIC PROCEDURES'.