

MUTA Antibody

Rabbit mAb

Catalog # AP92759

Product Information

Application	WB, IHC, IF, ICC, IHF
Primary Accession	P22033
Reactivity	Rat, Human, Mouse
Clonality	Monoclonal
Other Names	MCM; Methylmalonyl CoA isomerase; Mut;
Isotype	Rabbit IgG
Host	Rabbit
Calculated MW	83134

Additional Information

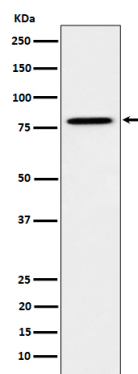
Dilution	WB 1:500~1:2000 IHC 1:50~1:200 ICC/IF 1:50~1:200
Purification	Affinity-chromatography
Immunogen	A synthesized peptide derived from human MUTA
Description	Involved in the degradation of several amino acids, odd-chain fatty acids and cholesterol via propionyl-CoA to the tricarboxylic acid cycle. MCM has different functions in other species.
Storage Condition and Buffer	Rabbit IgG in phosphate buffered saline , pH 7.4, 150mM NaCl, 0.02% sodium azide and 50% glycerol. Store at +4°C short term. Store at -20°C long term. Avoid freeze / thaw cycle.

Protein Information

Name	MMUT (HGNC:7526)
Function	Catalyzes the reversible isomerization of methylmalonyl-CoA (MMCoA) (generated from branched-chain amino acid metabolism and degradation of dietary odd chain fatty acids and cholesterol) to succinyl-CoA (3-carboxypropionyl-CoA), a key intermediate of the tricarboxylic acid cycle.
Cellular Location	Mitochondrion matrix. Mitochondrion. Cytoplasm

Images

Western blot analysis of MUTA expression in HeLa cell lysate.



Please note: All products are 'FOR RESEARCH USE ONLY. NOT FOR USE IN DIAGNOSTIC OR THERAPEUTIC PROCEDURES'.