

# SAMM50 Antibody

Rabbit mAb

Catalog # AP92764

## Product Information

<b>Application</b>	WB, IHC
<b>Primary Accession</b>	<a href="#">Q9Y512</a>
<b>Reactivity</b>	Human
<b>Clonality</b>	Monoclonal
<b>Other Names</b>	CGI 51; OMP85; SAM50; Samm50; TOB55;
<b>Isotype</b>	Rabbit IgG
<b>Host</b>	Rabbit
<b>Calculated MW</b>	51976

## Additional Information

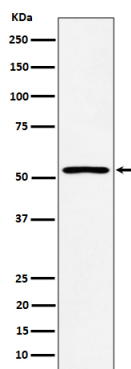
<b>Dilution</b>	WB 1:500~1:2000 IHC 1:50~1:200
<b>Purification</b>	Affinity-chromatography
<b>Immunogen</b>	A synthesized peptide derived from human SAMM50
<b>Description</b>	May be required for the assembly pathway of mitochondrial outer membrane proteins.
<b>Storage Condition and Buffer</b>	Rabbit IgG in phosphate buffered saline , pH 7.4, 150mM NaCl, 0.02% sodium azide and 50% glycerol. Store at +4°C short term. Store at -20°C long term. Avoid freeze / thaw cycle.

## Protein Information

<b>Name</b>	SAMM50
<b>Synonyms</b>	SAM50
<b>Function</b>	Plays a crucial role in the maintenance of the structure of mitochondrial cristae and the proper assembly of the mitochondrial respiratory chain complexes (PubMed: <a href="#">22252321</a> , PubMed: <a href="#">25781180</a> ). Required for the assembly of TOMM40 into the TOM complex (PubMed: <a href="#">15644312</a> ).
<b>Cellular Location</b>	Mitochondrion outer membrane; Multi-pass membrane protein. Cytoplasm {ECO:0000250 UniProtKB:Q6AXV4}. Mitochondrion

## Images

Western blot analysis of SAMM50 expression in HepG2 cell lysate.



Please note: All products are 'FOR RESEARCH USE ONLY. NOT FOR USE IN DIAGNOSTIC OR THERAPEUTIC PROCEDURES'.