

# PPM1E Antibody

Rabbit mAb

Catalog # AP92773

## Product Information

---

<b>Application</b>	WB, FC
<b>Primary Accession</b>	<a href="#">Q8WY54</a>
<b>Reactivity</b>	Human
<b>Clonality</b>	Monoclonal
<b>Other Names</b>	CaMKN; POPX1; PP2CH; Ppm1e;
<b>Isotype</b>	Rabbit IgG
<b>Host</b>	Rabbit
<b>Calculated MW</b>	83952

## Additional Information

---

<b>Dilution</b>	WB 1:500~1:2000 FC 1:50
<b>Purification</b>	Affinity-chromatography
<b>Immunogen</b>	A synthesized peptide derived from human PPM1E
<b>Description</b>	Protein phosphatase that inactivates multifunctional CaM kinases such as CAMK4 and CAMK2 (By similarity). Dephosphorylates and inactivates PAK.
<b>Storage Condition and Buffer</b>	Rabbit IgG in phosphate buffered saline , pH 7.4, 150mM NaCl, 0.02% sodium azide and 50% glycerol. Store at +4°C short term. Store at -20°C long term. Avoid freeze / thaw cycle.

## Protein Information

---

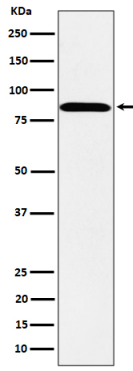
<b>Name</b>	PPM1E
<b>Synonyms</b>	CAMKN, KIAA1072, POPX1
<b>Function</b>	Protein phosphatase that inactivates multifunctional CaM kinases such as CAMK4 and CAMK2 (By similarity). Dephosphorylates and inactivates PAK. May play a role in the inhibition of actin fiber stress breakdown and in morphological changes driven by TNK2/CDC42. Dephosphorylates PRKAA2 (By similarity).
<b>Cellular Location</b>	Nucleus. Cytoplasm. Note=A truncated form, major form, with the C-terminal part missing, is mostly found in the cytoplasm and a little in the nucleus. The full-length, minor form, is found in the nucleus.

## Images

---

Western blot analysis of PPM1E expression in SH-SY5Y

cell lysate.



Please note: All products are 'FOR RESEARCH USE ONLY. NOT FOR USE IN DIAGNOSTIC OR THERAPEUTIC PROCEDURES'.