

# Spermine synthase Antibody

Rabbit mAb

Catalog # AP92776

## Product Information

---

<b>Application</b>	WB, IF, ICC
<b>Primary Accession</b>	<a href="#">P52788</a>
<b>Reactivity</b>	Rat, Human, Mouse
<b>Clonality</b>	Monoclonal
<b>Other Names</b>	MRSR; SMS; Spermine synthase; SPMSY; SpS; SRS;
<b>Isotype</b>	Rabbit IgG
<b>Host</b>	Rabbit
<b>Calculated MW</b>	41268

## Additional Information

---

<b>Dilution</b>	WB 1:500~1:2000 ICC/IF 1:50~1:200
<b>Purification</b>	Affinity-chromatography
<b>Immunogen</b>	A synthesized peptide derived from human Spermine synthase
<b>Description</b>	Required for normal viability, growth and fertility.
<b>Storage Condition and Buffer</b>	Rabbit IgG in phosphate buffered saline , pH 7.4, 150mM NaCl, 0.02% sodium azide and 50% glycerol. Store at +4°C short term. Store at -20°C long term. Avoid freeze / thaw cycle.

## Protein Information

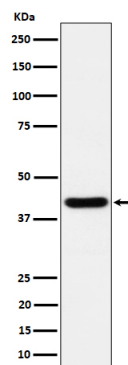
---

<b>Name</b>	SMS {ECO:0000303 PubMed:14508504, ECO:0000312 HGNC:HGNC:11123}
<b>Function</b>	Catalyzes the production of spermine from spermidine and decarboxylated S-adenosylmethionine (dcSAM).

## Images

---

Western blot analysis of Spermine synthase expression in HeLa cell lysate.



Please note: All products are 'FOR RESEARCH USE ONLY. NOT FOR USE IN DIAGNOSTIC OR THERAPEUTIC PROCEDURES'.