

# TAF15 Antibody

Rabbit mAb

Catalog # AP92779

## Product Information

<b>Application</b>	WB, IHC, IF, FC, ICC, IHF
<b>Primary Accession</b>	<a href="#">Q92804</a>
<b>Reactivity</b>	Rat, Human, Mouse
<b>Clonality</b>	Monoclonal
<b>Other Names</b>	Npl3; RBP56; RNA binding protein 56; TAF; TAF15; TAF2N; TAFII68;
<b>Isotype</b>	Rabbit IgG
<b>Host</b>	Rabbit
<b>Calculated MW</b>	61830

## Additional Information

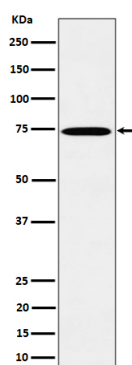
<b>Dilution</b>	WB 1:500~1:2000 IHC 1:50~1:200 ICC/IF 1:50~1:200 FC 1:50
<b>Purification</b>	Affinity-chromatography
<b>Immunogen</b>	A synthesized peptide derived from human TAF15
<b>Description</b>	RNA and ssDNA-binding protein that may play specific roles during transcription initiation at distinct promoters. Can enter the preinitiation complex together with the RNA polymerase II (Pol II).
<b>Storage Condition and Buffer</b>	Rabbit IgG in phosphate buffered saline , pH 7.4, 150mM NaCl, 0.02% sodium azide and 50% glycerol. Store at +4°C short term. Store at -20°C long term. Avoid freeze / thaw cycle.

## Protein Information

<b>Name</b>	TAF15
<b>Synonyms</b>	RBP56, TAF2N
<b>Function</b>	RNA and ssDNA-binding protein that may play specific roles during transcription initiation at distinct promoters. Binds to ssRNA containing the consensus sequence 5'-AGGUAA-3' (PubMed: <a href="#">21256132</a> ). Can enter the preinitiation complex together with the RNA polymerase II (Pol II).
<b>Cellular Location</b>	Nucleus. Cytoplasm. Note=Shuttles from the nucleus to the cytoplasm
<b>Tissue Location</b>	Ubiquitous. Observed in all fetal and adult tissues

## Images

Western blot analysis of TAF15 expression in HeLa cell



lysate.

Please note: All products are 'FOR RESEARCH USE ONLY. NOT FOR USE IN DIAGNOSTIC OR THERAPEUTIC PROCEDURES'.