

ERp19 Antibody

Rabbit mAb

Catalog # AP92782

Product Information

Application	WB, IHC, IF, ICC, IHF
Primary Accession	O95881
Reactivity	Rat, Human, Mouse
Clonality	Monoclonal
Other Names	AG1; AGR1; ER protein 18; ER protein 19; ERP 18; ERP16; ERP19; hAG1; hTLP19; PDIA16; TLP19; TXNDC12;
Isotype	Rabbit IgG
Host	Rabbit
Calculated MW	19206

Additional Information

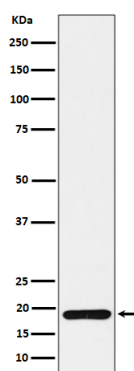
Dilution	WB 1:500~1:2000 IHC 1:50~1:200 ICC/IF 1:50~1:200
Purification	Affinity-chromatography
Immunogen	A synthesized peptide derived from human ERp19
Description	ERp19 belongs to the thioredoxin superfamily. Members of this superfamily possess a thioredoxin fold with a consensus active-site sequence (CxxC) and have roles in redox regulation, defense against oxidative stress, refolding of disulfide-containing proteins, and regulation of transcription factors.
Storage Condition and Buffer	Rabbit IgG in phosphate buffered saline , pH 7.4, 150mM NaCl, 0.02% sodium azide and 50% glycerol. Store at +4°C short term. Store at -20°C long term. Avoid freeze / thaw cycle.

Protein Information

Name	TXNDC12 (HGNC:24626)
Function	Protein-disulfide reductase of the endoplasmic reticulum that promotes disulfide bond formation in client proteins through its thiol- disulfide oxidase activity.
Cellular Location	Endoplasmic reticulum lumen {ECO:0000255 PROSITE- ProRule:PRU10138, ECO:0000269 PubMed:12761212}
Tissue Location	Widely expressed..

Images

Western blot analysis of ERp19 expression in 293T cell



lysate.

Please note: All products are 'FOR RESEARCH USE ONLY. NOT FOR USE IN DIAGNOSTIC OR THERAPEUTIC PROCEDURES'.