

MRPS15 Antibody

Rabbit mAb

Catalog # AP92784

Product Information

Application	WB, IHC, IF, ICC, IHF
Primary Accession	P82914
Reactivity	Human
Clonality	Monoclonal
Other Names	DC37; MRPS15; RPMS15; S15mt;
Isotype	Rabbit IgG
Host	Rabbit
Calculated MW	29842

Additional Information

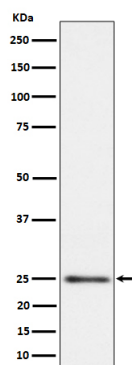
Dilution	WB 1:500~1:2000 IHC 1:50~1:200 ICC/IF 1:50~1:200
Purification	Affinity-chromatography
Immunogen	A synthesized peptide derived from human MRPS15
Description	Belongs to the ribosomal protein S15P family.
Storage Condition and Buffer	Rabbit IgG in phosphate buffered saline , pH 7.4, 150mM NaCl, 0.02% sodium azide and 50% glycerol. Store at +4°C short term. Store at -20°C long term. Avoid freeze / thaw cycle.

Protein Information

Name	MRPS15
Synonyms	RPMS15
Cellular Location	Mitochondrion matrix

Images

Western blot analysis of MRPS15 expression in HeLa cell lysate.



Please note: All products are 'FOR RESEARCH USE ONLY. NOT FOR USE IN DIAGNOSTIC OR THERAPEUTIC PROCEDURES'.