

Somatostatin Receptor 1 Antibody

Rabbit mAb

Catalog # AP92790

Product Information

Application	WB, IF, ICC
Primary Accession	P30872
Reactivity	Human
Clonality	Monoclonal
Other Names	Somatostatin R1; SRIF2; SS1R; Sstr1;
Isotype	Rabbit IgG
Host	Rabbit
Calculated MW	42686

Additional Information

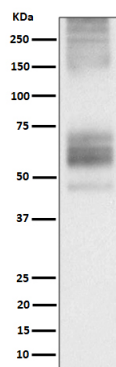
Dilution	WB 1:500~1:2000 ICC/IF 1:50~1:200
Purification	Affinity-chromatography
Immunogen	A synthesized peptide derived from human Somatostatin Receptor 1
Description	Receptor for somatostatin with higher affinity for somatostatin-14 than -28. This receptor is coupled via pertussis toxin sensitive G proteins to inhibition of adenylyl cyclase.
Storage Condition and Buffer	Rabbit IgG in phosphate buffered saline , pH 7.4, 150mM NaCl, 0.02% sodium azide and 50% glycerol. Store at +4°C short term. Store at -20°C long term. Avoid freeze / thaw cycle.

Protein Information

Name	SSTR1
Function	Receptor for somatostatin with higher affinity for somatostatin-14 than -28. This receptor is coupled via pertussis toxin sensitive G proteins to inhibition of adenylyl cyclase. In addition it stimulates phosphotyrosine phosphatase and Na(+)/H(+) exchanger via pertussis toxin insensitive G proteins.
Cellular Location	Cell membrane; Multi-pass membrane protein.
Tissue Location	Fetal kidney, fetal liver, and adult pancreas, brain, lung, jejunum and stomach

Images

Western blot analysis of Somatostatin Receptor 1 expression in 293T transfected with Somatostatin Receptor 1 cell lysate.



Please note: All products are 'FOR RESEARCH USE ONLY. NOT FOR USE IN DIAGNOSTIC OR THERAPEUTIC PROCEDURES'.