

# Syntaxin 16 Antibody

Rabbit mAb

Catalog # AP92793

## Product Information

---

|                          |                        |
|--------------------------|------------------------|
| <b>Application</b>       | WB, IHC, IF, ICC, IHF  |
| <b>Primary Accession</b> | <a href="#">O14662</a> |
| <b>Reactivity</b>        | Rat, Human, Mouse      |
| <b>Clonality</b>         | Monoclonal             |
| <b>Other Names</b>       | hsyn16; Stx16; Syn16;  |

|                      |            |
|----------------------|------------|
| <b>Isotype</b>       | Rabbit IgG |
| <b>Host</b>          | Rabbit     |
| <b>Calculated MW</b> | 37031      |

## Additional Information

---

|                                     |   |
|-------------------------------------|---|
| <b>Dilution</b>                     | WB 1:500~1:2000 IHC 1:50~1:200 ICC/IF 1:50~1:200  |
| <b>Purification</b>                 | Affinity-chromatography   |
| <b>Immunogen</b>                    | A synthesized peptide derived from human Syntaxin 16  |
| <b>Description</b>                  | SNARE involved in vesicular transport from the late endosomes to the trans-Golgi network.   |
| <b>Storage Condition and Buffer</b> | Rabbit IgG in phosphate buffered saline , pH 7.4, 150mM NaCl, 0.02% sodium azide and 50% glycerol. Store at +4°C short term. Store at -20°C long term. Avoid freeze / thaw cycle. |

## Protein Information

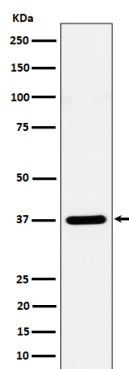
---

|                          |   |
|--------------------------|---|
| <b>Name</b>              | STX16   |
| <b>Function</b>          | SNARE involved in vesicular transport from the late endosomes to the trans-Golgi network. |
| <b>Cellular Location</b> | Golgi apparatus membrane; Single-pass type IV membrane protein                            |
| <b>Tissue Location</b>   | Ubiquitous.   |

## Images

---

Western blot analysis of Syntaxin 16 expression in HeLa cell lysate.



Please note: All products are 'FOR RESEARCH USE ONLY. NOT FOR USE IN DIAGNOSTIC OR THERAPEUTIC PROCEDURES'.