

# TRPV5 Antibody

Rabbit mAb

Catalog # AP92795

## Product Information

<b>Application</b>	WB, IHC
<b>Primary Accession</b>	<a href="#">Q9NQA5</a>
<b>Reactivity</b>	Rat, Human, Mouse
<b>Clonality</b>	Monoclonal
<b>Other Names</b>	CAT2; ECaC; ECaC1; OTRPC3; TrpV5;
<b>Isotype</b>	Rabbit IgG
<b>Host</b>	Rabbit
<b>Calculated MW</b>	82562

## Additional Information

<b>Dilution</b>	WB 1:500~1:2000 IHC 1:50~1:200
<b>Purification</b>	Affinity-chromatography
<b>Immunogen</b>	A synthesized peptide derived from human TRPV5
<b>Description</b>	Constitutively active calcium selective cation channel thought to be involved in Ca(2+) reabsorption in kidney and intestine.
<b>Storage Condition and Buffer</b>	Rabbit IgG in phosphate buffered saline , pH 7.4, 150mM NaCl, 0.02% sodium azide and 50% glycerol. Store at +4°C short term. Store at -20°C long term. Avoid freeze / thaw cycle.

## Protein Information

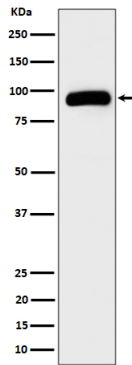
<b>Name</b>	TRPV5
<b>Synonyms</b>	ECAC1 {ECO:0000303   PubMed:10945469}
<b>Function</b>	Constitutively active calcium selective cation channel thought to be involved in Ca(2+) reabsorption in kidney and intestine (PubMed: <a href="#">11549322</a> , PubMed: <a href="#">18768590</a> ). Required for normal Ca(2+) reabsorption in the kidney distal convoluted tubules (By similarity). The channel is activated by low internal calcium level and the current exhibits an inward rectification (PubMed: <a href="#">11549322</a> , PubMed: <a href="#">18768590</a> ). A Ca(2+)-dependent feedback regulation includes fast channel inactivation and slow current decay (By similarity). Heteromeric assembly with TRPV6 seems to modify channel properties. TRPV5-TRPV6 heteromultimeric concatemers exhibit voltage-dependent gating (By similarity).
<b>Cellular Location</b>	Apical cell membrane; Multi-pass membrane protein. Note=Colocalized with S100A10 and ANAX2 along the apical domain of kidney distal tubular cells (By similarity) The expression of the glycosylated form in the cell membrane is increased in the presence of WNK3 (PubMed:18768590)

## Tissue Location

Expressed at high levels in kidney, small intestine and pancreas, and at lower levels in testis, prostate, placenta, brain, colon and rectum.

## Images

---



Western blot analysis of TRPV5 expression in HepG2 cell lysate.

Please note: All products are 'FOR RESEARCH USE ONLY. NOT FOR USE IN DIAGNOSTIC OR THERAPEUTIC PROCEDURES'.