

# SNAP29 Antibody

Rabbit mAb

Catalog # AP92796

## Product Information

---

**Application** WB, IP  
**Primary Accession** [O95721](#)  
**Reactivity** Rat, Human, Mouse  
**Clonality** Monoclonal  
**Other Names** CEDNIK; SNAP29;

**Isotype** Rabbit IgG  
**Host** Rabbit  
**Calculated MW** 28970

## Additional Information

---

**Dilution** WB 1:500~1:2000 IP 1:50  
**Purification** Affinity-chromatography  
**Immunogen** A synthesized peptide derived from human SNAP29  
**Description** Involved in multiple membrane trafficking steps.  
**Storage Condition and Buffer** Rabbit IgG in phosphate buffered saline , pH 7.4, 150mM NaCl, 0.02% sodium azide and 50% glycerol. Store at +4°C short term. Store at -20°C long term. Avoid freeze / thaw cycle.

## Protein Information

---

**Name** SNAP29 ( [HGNC:11133](#))

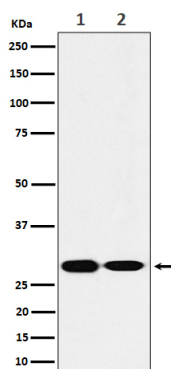
**Function** SNAREs, soluble N-ethylmaleimide-sensitive factor-attachment protein receptors, are essential proteins for fusion of cellular membranes. SNAREs localized on opposing membranes assemble to form a trans-SNARE complex, an extended, parallel four alpha-helical bundle that drives membrane fusion. SNAP29 is a SNARE involved in autophagy through the direct control of autophagosome membrane fusion with the lysosome membrane. Also plays a role in ciliogenesis by regulating membrane fusions.

**Cellular Location** Cytoplasm. Golgi apparatus membrane {ECO:0000250|UniProtKB:Q9Z2P6}; Peripheral membrane protein. Cytoplasmic vesicle, autophagosome membrane; Peripheral membrane protein. Cell projection, cilium membrane; Peripheral membrane protein. Note=Appears to be mostly membrane-bound, probably via interaction with syntaxins, but a significant portion is cytoplasmic Localizes to the ciliary pocket from where the cilium protrudes

**Tissue Location** Found in brain, heart, kidney, liver, lung, placenta, skeletal muscle, spleen and pancreas

## Images

---



Western blot analysis of SNAP29 expression in (1) HeLa cell lysate; (2) Mouse brain lysate.

Please note: All products are 'FOR RESEARCH USE ONLY. NOT FOR USE IN DIAGNOSTIC OR THERAPEUTIC PROCEDURES'.